

Manual | EN

# TwinCAT 2

Remote Manager



TwinCAT 2 | System



# Table of contents

<b>1 Foreword .....</b>	<b>5</b>
1.1 Notes on the documentation.....	5
1.2 Safety instructions .....	6
1.3 Notes on information security .....	7
<b>2 Introduction.....</b>	<b>8</b>
<b>3 PLC.....</b>	<b>9</b>
<b>4 IO.....</b>	<b>10</b>



# 1 Foreword

## 1.1 Notes on the documentation

This description is only intended for the use of trained specialists in control and automation engineering who are familiar with applicable national standards.

It is essential that the documentation and the following notes and explanations are followed when installing and commissioning the components.

It is the duty of the technical personnel to use the documentation published at the respective time of each installation and commissioning.

The responsible staff must ensure that the application or use of the products described satisfy all the requirements for safety, including all the relevant laws, regulations, guidelines and standards.

### Disclaimer

The documentation has been prepared with care. The products described are, however, constantly under development.

We reserve the right to revise and change the documentation at any time and without prior announcement. No claims for the modification of products that have already been supplied may be made on the basis of the data, diagrams and descriptions in this documentation.

### Trademarks

Beckhoff®, TwinCAT®, TwinCAT/BSD®, TC/BSD®, EtherCAT®, EtherCAT G®, EtherCAT G10®, EtherCAT P®, Safety over EtherCAT®, TwinSAFE®, XFC®, XTS® and XPlanar® are registered trademarks of and licensed by Beckhoff Automation GmbH.

Other designations used in this publication may be trademarks whose use by third parties for their own purposes could violate the rights of the owners.

### Patent Pending

The EtherCAT Technology is covered, including but not limited to the following patent applications and patents:

EP1590927, EP1789857, EP1456722, EP2137893, DE102015105702  
with corresponding applications or registrations in various other countries.



**EtherCAT®**

EtherCAT® is a registered trademark and patented technology, licensed by Beckhoff Automation GmbH, Germany

### Copyright

© Beckhoff Automation GmbH & Co. KG, Germany.

The reproduction, distribution and utilization of this document as well as the communication of its contents to others without express authorization are prohibited.

Offenders will be held liable for the payment of damages. All rights reserved in the event of the grant of a patent, utility model or design.

## 1.2 Safety instructions

### Safety regulations

Please note the following safety instructions and explanations!  
Product-specific safety instructions can be found on following pages or in the areas mounting, wiring, commissioning etc.

### Exclusion of liability

All the components are supplied in particular hardware and software configurations appropriate for the application. Modifications to hardware or software configurations other than those described in the documentation are not permitted, and nullify the liability of Beckhoff Automation GmbH & Co. KG.

### Personnel qualification

This description is only intended for trained specialists in control, automation and drive engineering who are familiar with the applicable national standards.

### Description of symbols

In this documentation the following symbols are used with an accompanying safety instruction or note. The safety instructions must be read carefully and followed without fail!

#### **DANGER**

##### **Serious risk of injury!**

Failure to follow the safety instructions associated with this symbol directly endangers the life and health of persons.

#### **WARNING**

##### **Risk of injury!**

Failure to follow the safety instructions associated with this symbol endangers the life and health of persons.

#### **CAUTION**

##### **Personal injuries!**

Failure to follow the safety instructions associated with this symbol can lead to injuries to persons.

#### **NOTE**

##### **Damage to the environment or devices**

Failure to follow the instructions associated with this symbol can lead to damage to the environment or equipment.



##### **Tip or pointer**

This symbol indicates information that contributes to better understanding.

## 1.3 Notes on information security

The products of Beckhoff Automation GmbH & Co. KG (Beckhoff), insofar as they can be accessed online, are equipped with security functions that support the secure operation of plants, systems, machines and networks. Despite the security functions, the creation, implementation and constant updating of a holistic security concept for the operation are necessary to protect the respective plant, system, machine and networks against cyber threats. The products sold by Beckhoff are only part of the overall security concept. The customer is responsible for preventing unauthorized access by third parties to its equipment, systems, machines and networks. The latter should be connected to the corporate network or the Internet only if appropriate protective measures have been set up.

In addition, the recommendations from Beckhoff regarding appropriate protective measures should be observed. Further information regarding information security and industrial security can be found in our <https://www.beckhoff.com/secguide>.

Beckhoff products and solutions undergo continuous further development. This also applies to security functions. In light of this continuous further development, Beckhoff expressly recommends that the products are kept up to date at all times and that updates are installed for the products once they have been made available. Using outdated or unsupported product versions can increase the risk of cyber threats.

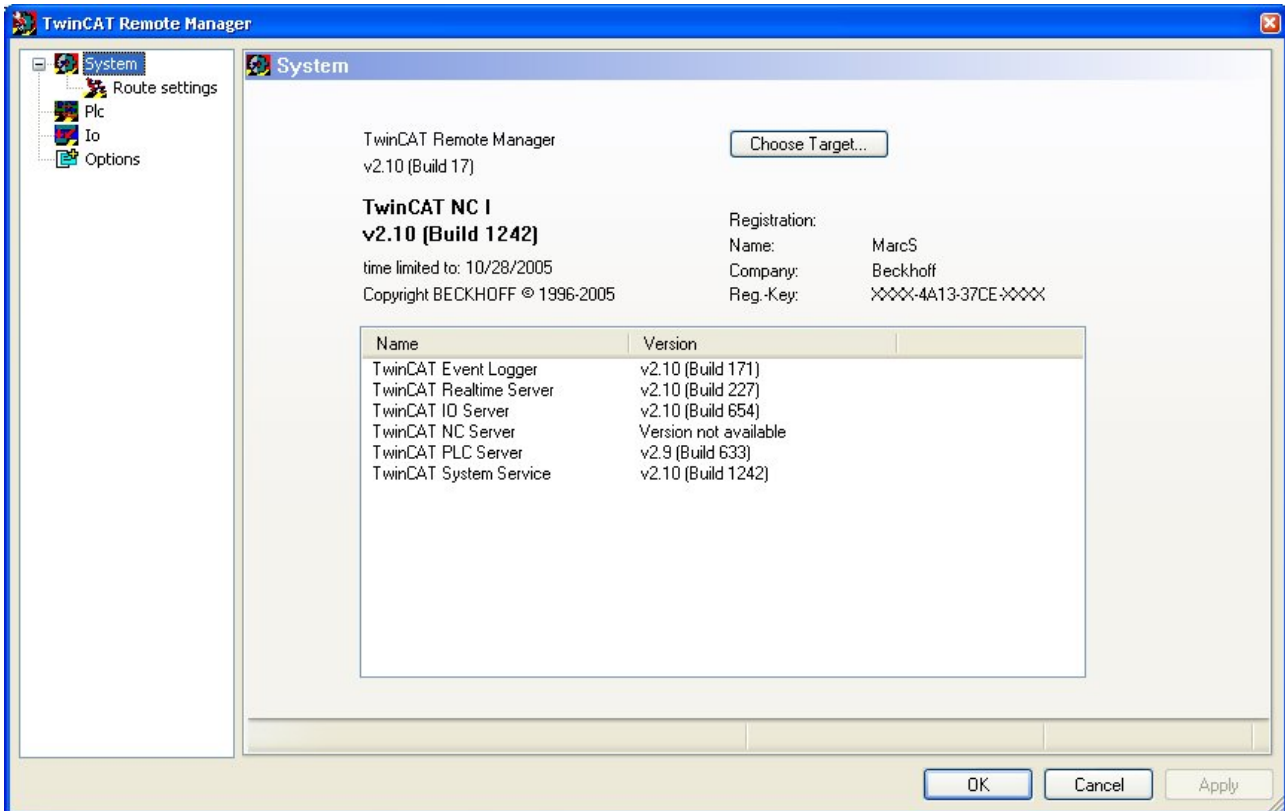
To stay informed about information security for Beckhoff products, subscribe to the RSS feed at <https://www.beckhoff.com/secinfo>.

## 2 Introduction

The TwinCAT RemoteManager offers the option of managing several different TwinCAT versions. The TwinCAT RemoteManager supports different versions of the TwinCAT system manager and of TwinCAT PLC control, and therefore enables a specific version to be used for project maintenance and/or development purposes (also directly within systems). The TwinCAT RemoteManager selects the required programming tool version depending on the target version, the project file, or the symbol file.

Available versions are installed under "\\TwinCAT\version\" and are either set up with a current TwinCAT 2.10 installation or are available with a version CD. If a remote system is selected, the TwinCAT RemoteManager also supports version uploads (only meaningful for standard scope).

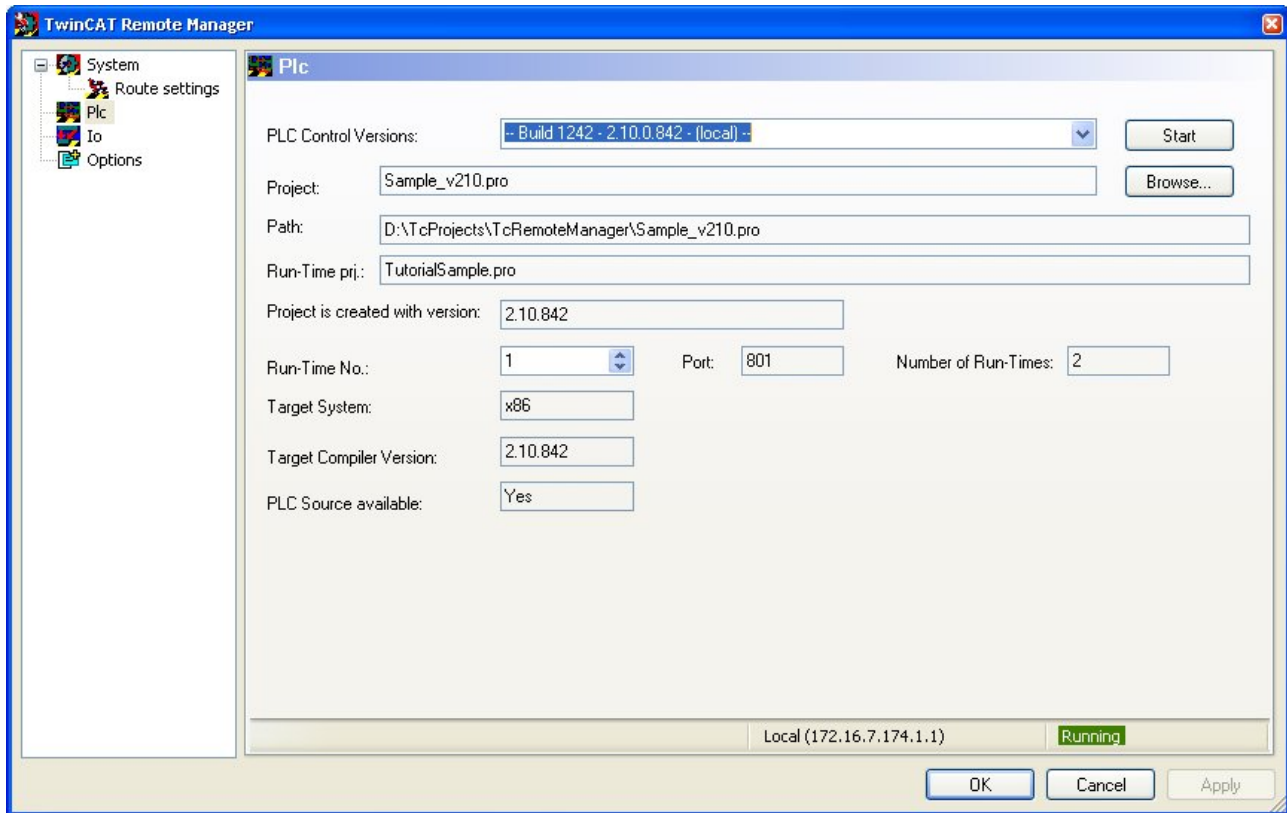
When the TwinCAT RemoteManager is started it creates a version overview of the installed system components:





### 3 PLC

With the PLC features, version information is available once a project or a target system has been selected. The TwinCAT RemoteManager displays the version that was used for creating the project (or for the last compilation of the project) and selects the associated version from the version list. Via the "Start" button the TwinCAT PLC Control starts the selected version and loads the PLC project.

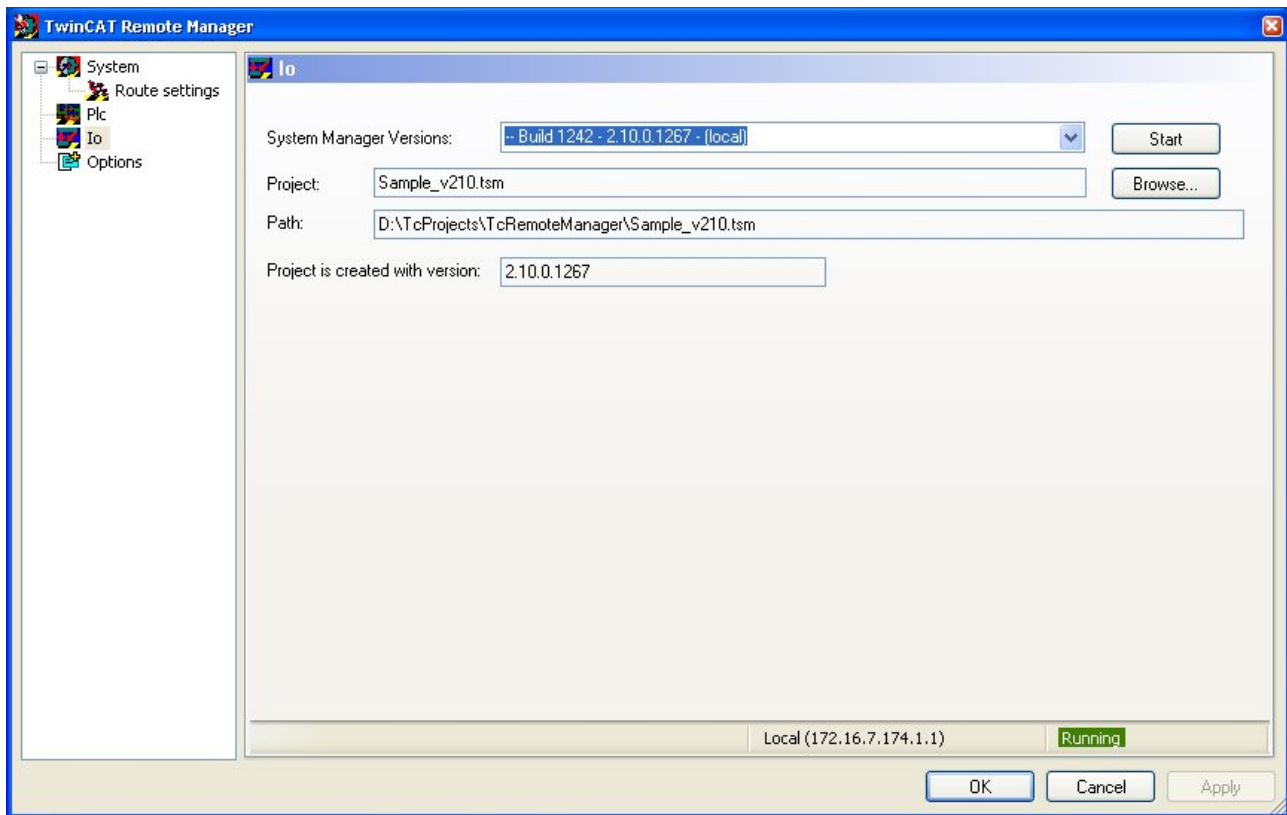


Detailed description of PLC view:

- **PLC Control Versions:** List of available PLC Control versions (the version matching the project is preselected)
- **Project:** File name for the PLC project
- **Path:** Path information for the PLC project
- **Run-Time prj.:** The project currently running in the target system, if available
- **Project is created with version:** Version that was used to create or compile the project
- **Run-Time No. and Port:** Current run-time system number and port
- **Number of Run-Times:** Number of run-time systems
- **Target System:** Compiler used (x86, C166, ARM)
- **Target Compiler Version:** Compiler version used for loading the project into the PLC
- **PLC Source available:** Indicates whether a PLC project is available as source in the PLC

## 4 IO

With the IO features, version information is available once a project or a target system has been selected. The TwinCAT RemoteManager displays the version that was used for creating the project and selects the associated version from the version list. The TwinCAT system manager starts the selected version via the "Start" button.



Detailed description of IO view:

- **System Manager Versions:** List of available system manager versions (the version matching the project is preselected)
- **Project:** File name for the IO configuration
- **Path:** Path information for the IO project
- **Project is created with version:** Version that was used to create or compile the project



More Information:  
**[www.beckhoff.com/](http://www.beckhoff.com/)**

Beckhoff Automation GmbH & Co. KG  
Hülshorstweg 20  
33415 Verl  
Germany  
Phone: +49 5246 9630  
[info@beckhoff.com](mailto:info@beckhoff.com)  
[www.beckhoff.com](http://www.beckhoff.com)

