

Graphic Driver Installation Instructions

for Motherboard:

**EP-M845B, IP-4GVI63 and IP-4GVI20 for Intel Pentium 4
with Onboard Graphic**

for Operating Systems:

Microsoft Windows NT 4.0, Windows 2000 and Windows XP

Version: 1.0
Date: 2008-02-05

BECKHOFF

General Notes

Notes on the Documentation

This description is only intended for the use of trained specialists in control and automation engineering who are familiar with the applicable national standards. It is essential that the following notes and explanations are followed when installing and commissioning these components.

Liability Conditions

The responsible staff must ensure that the application or use of the products described satisfy all the requirements for safety, including all the relevant laws, regulations, guidelines and standards.

The documentation has been prepared with care. The products described are, however, constantly under development. For that reason the documentation is not in every case checked for consistency with performance data, standards or other characteristics. None of the statements of this manual represents a guarantee (Garantie) in the meaning of § 443 BGB of the German Civil Code or a statement about the contractually expected fitness for a particular purpose in the meaning of § 434 par. 1 sentence 1 BGB. In the event that it contains technical or editorial errors, we retain the right to make alterations at any time and without warning. No claims for the modification of products that have already been supplied may be made on the basis of the data, diagrams and descriptions in this documentation.

© This documentation is copyrighted. Any reproduction or third party use of this publication, whether in whole or in part, without the written permission of Beckhoff Automation GmbH, is forbidden.

Description of safety symbols

The following safety symbols are used in this operating manual. They are intended to alert the reader to the associated safety instructions.



Warning

This symbol is intended to highlight risks for equipment, materials or the environment.



Note

This symbol indicates information that contributes to better understanding.

Installation Instructions



Note

It is not allowed to change the graphic configuration as resolution, frequency or colour depth while the machine control is running.

Microsoft Windows NT 4.0

- Open the folder \Graphic
- Open the folder of your appropriate motherboard
- Open the folder \NT4
- Run the winnt4131.exe in this directory
- The driver will now be installed
- Restart the PC after the installation has finished

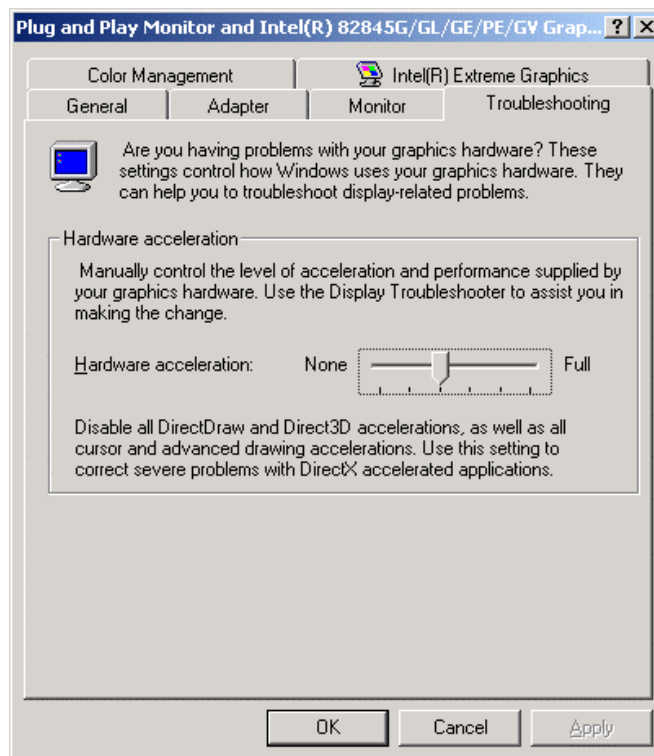


Warning

At the operating system Microsoft Windows NT 4.0 running on Industrial PCs with motherboard EP-M845B, IP-4GVI63 and IP-4GVI20 for Intel Pentium 4 it is not allowed to use 3D graphic software like AutoCAD, MicrostationSE, AVS/Express at the same time together with TwinCAT automation software. Please use the operating systems Microsoft Windows 2000 or Windows XP if 3D graphic software and TwinCAT must run together and install the drivers as described below.

Microsoft Windows 2000

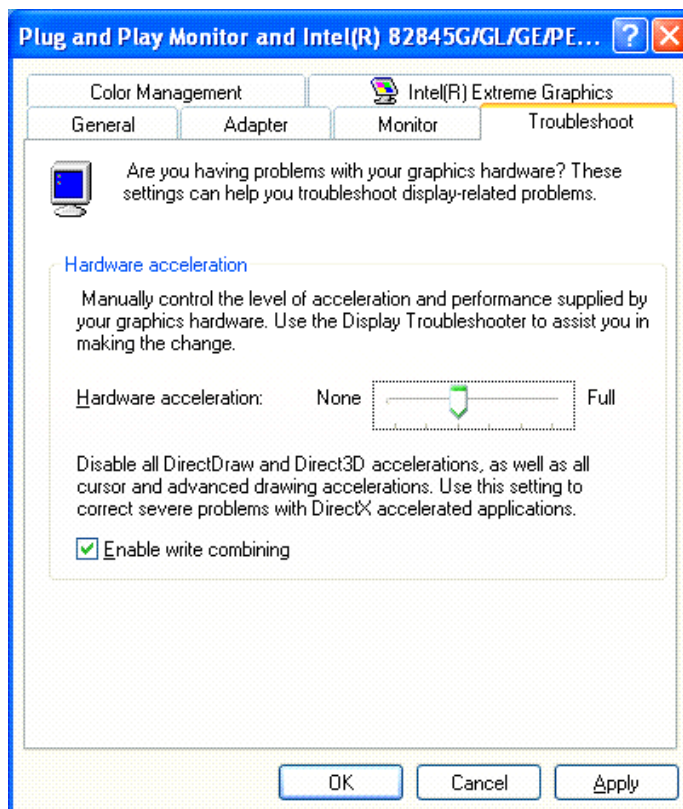
- Open the folder \DirectX\DirectX81b\W2000
- Run the program DX81Nteng
- Restart the PC after the installation has finished
- Open the folder \Graphic
- Open the folder of your appropriate motherboard
- Open the folder W2000
- Run the win2k_xp131.exe in this directory
- The driver will now be installed
- Restart the PC after the installation has finished
- After restarting the system move to Settings\Control Panel\Display
- Select the Troubleshooting section as you can see below and move the Slider to the third position from the left → **All DirectDraw-, Direct3D-, Cursor- and Drawing Accelerations disabled**



- Apply changes
- Restart the PC

Microsoft Windows XP

- Open the folder \Graphic
- Open the folder of your appropriate motherboard
- Open the folder \XP
- Run the win2k_xp131.exe in this directory
- The driver will now be installed
- Restart the PC after the installation has finished
- Select the settings from the display properties
- Click on the button "Advanced"
- Select the Troubleshooting section as you can see below and move the Slider to the third position from the left → **All DirectDraw-, Direct3D-, Cursor- and Drawing Accelerations disabled**



- Apply changes
- Restart the PC

Service and Support

Beckhoff and their partners around the world offer comprehensive service and support, making available fast and competent assistance with all questions related to Beckhoff products and system solutions.

Beckhoff's branch offices and representatives

Please contact your Beckhoff branch office or representative for [local support and service](#) on Beckhoff products!

The addresses of Beckhoff's branch offices and representatives round the world can be found on her internet pages:

<http://www.beckhoff.com>

You will also find further [documentation](#) for Beckhoff components there.

Beckhoff headquarters

Beckhoff Automation GmbH
Eiserstraße 5
D-33415 Verl
Germany

Phone: +49(0)5246/963-0
Fax: +49(0)5246/963-198
e-mail: info@beckhoff.com

Beckhoff Support

Support offers you comprehensive technical assistance, helping you not only with the application of individual Beckhoff products, but also with other, wide-ranging services:

- world-wide support
- design, programming and commissioning of complex automation systems
- and extensive training program for Beckhoff system components

Hotline: +49(0)5246/963-157
Fax: +49(0)5246/963-9157
e-mail: support@beckhoff.com

Beckhoff Service

The Beckhoff Service Center supports you in all matters of after-sales service:

- on-site service
- repair service
- spare parts service
- hotline service

Hotline: +49(0)5246/963-460
Fax: +49(0)5246/963-479
e-mail: service@beckhoff.com

Quote the project number

If servicing is required, please quote the **project number** of your Industrial PC.