

Assembly instructions | EN

AX2090-NF50

Mains filter

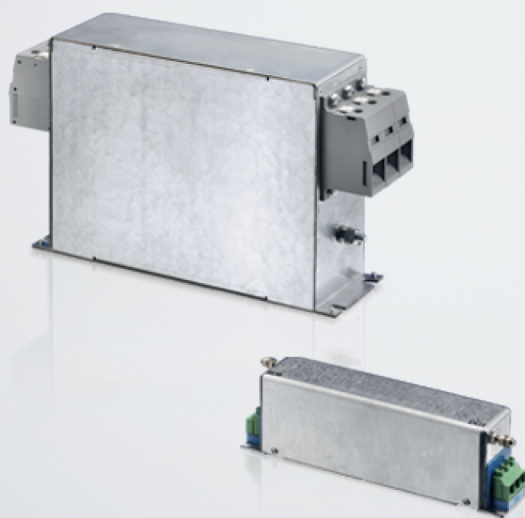


Table of content

| | |
|---|-----------|
| 1 Foreword | 5 |
| 1.1 Notes on the documentation..... | 5 |
| 1.2 Documentation issue status | 6 |
| 1.3 Appropriate use | 6 |
| 2 Safety | 7 |
| 2.1 General safety instructions | 7 |
| 2.1.1 Personel qualification..... | 7 |
| 2.1.2 Description of safety symbols | 7 |
| 2.2 Special safety instructions for AX2090-NF50 | 8 |
| 3 Installing the mains filter | 9 |
| 3.1 Circuit diagram | 10 |
| 3.2 Dimensions and dimensional drawings | 10 |
| 4 Technical data | 12 |
| 5 Support and Service | 13 |

1 Foreword

1.1 Notes on the documentation

This description is only intended for the use of trained specialists in control and automation engineering who are familiar with the applicable national standards.

It is essential that the documentation and the following notes and explanations are followed when installing and commissioning the components.

It is the duty of the technical personnel to use the documentation published at the respective time of each installation and commissioning.

The responsible staff must ensure that the application or use of the products described satisfy all the requirements for safety, including all the relevant laws, regulations, guidelines and standards.

Disclaimer

The documentation has been prepared with care. The products described are, however, constantly under development.

We reserve the right to revise and change the documentation at any time and without prior announcement. No claims for the modification of products that have already been supplied may be made on the basis of the data, diagrams and descriptions in this documentation.

Trademarks

Beckhoff®, TwinCAT®, EtherCAT®, Safety over EtherCAT®, TwinSAFE®, XFC® and XTS® are registered trademarks of and licensed by Beckhoff Automation GmbH.

Other designations used in this publication may be trademarks whose use by third parties for their own purposes could violate the rights of the owners.

Patent Pending

The EtherCAT Technology is covered, including but not limited to the following patent applications and patents:

EP1590927, EP1789857, DE102004044764, DE102007017835

with corresponding applications or registrations in various other countries.

The TwinCAT Technology is covered, including but not limited to the following patent applications and patents:

EP0851348, US6167425 with corresponding applications or registrations in various other countries.

EtherCAT®

EtherCAT® is registered trademark and patented technology, licensed by Beckhoff Automation GmbH, Germany

Copyright

© Beckhoff Automation GmbH & Co. KG, Germany.

The reproduction, distribution and utilization of this document as well as the communication of its contents to others without express authorization are prohibited.

Offenders will be held liable for the payment of damages. All rights reserved in the event of the grant of a patent, utility model or design.

1.2 Documentation issue status

Origin of the document

This documentation was originally written in German. All other languages are derived from the German original.

Product features

Only the product features specified in the current user documentation are valid. Further information given on the product pages of the Beckhoff homepage, in emails or in other publications is not authoritative.

| Version | Comment |
|---------|--|
| 1.2 | Chapter update: Documentation issue status 1.2 ;Technical data 4 |
| 1.1 | General update |
| 1.0 | First published |

1.3 Appropriate use

The mains filters of the series "AX2090-NF50" are exclusively intended for application in the control cabinet as power supply unit of the AX5000. The filters are installed together with the servo drive as components in electrical systems and machinery and may only be used in this way.

2 Safety

2.1 General safety instructions

2.1.1 Personnel qualification

This description is only intended for trained specialists in control, automation and drive engineering who are familiar with the applicable national standards.

2.1.2 Description of safety symbols

The following safety symbols and associated safety instructions are used in this document. These safety instructions must be read and followed.

| |
|---|
| ⚠ DANGER |
| <p>Serious risk of injury!</p> <p>Failure to follow the safety instructions associated with this symbol directly endangers the life and health of persons.</p> |
| ⚠ WARNING |
| <p>Caution – Risk of injury!</p> <p>Failure to follow the safety instructions associated with this symbol endangers the life and health of persons.</p> |
| ⚠ CAUTION |
| <p>Personal injuries!</p> <p>Failure to follow the safety instructions associated with this symbol can be lead to injuries to persons.</p> |
| NOTE |
| <p>Damage to the environment or devices!</p> <p>Failure to follow the safety instructions associated with this symbol can be lead to damage to the environment or equipment.</p> |



Tip or pointer

This symbol indicates information that contributes to better understanding.



UL note

This symbol indicates important information regarding UL certification.

2.2 Special safety instructions for AX2090-NF50

The safety instructions are designed to avert danger and must be followed during installation, commissioning, production, troubleshooting, maintenance and trial or test assemblies.

The mains filter series AX2090-NF50 are not designed for stand-alone operation and must always be installed in a machine or system. After installation the additional documentation and safety instructions provided by the machine manufacturer must be read and followed.

The responsible staff must ensure that the application or use of the products described satisfy all the requirements for safety, including all the relevant laws, regulations and guidelines.

DANGER

Serious risk of injury through electric shock!

Due to the DC link capacitors dangerous voltage ($> 890V_{DC}$) may persist at the DC link contacts "ZK+ and ZK- (DC+ and DC-)" and "RB+ and RB-" after the servo drive has been disconnected from the mains supply. After disconnecting the servo drive wait at AX5101 - AX5125 and AX520x; 5 minutes, at AX5140/AX5160/AX5172; 15 minutes, at AX5190/AX5191; 30 minutes and at AX5192/AX5193; 45 minutes and measure the voltage at the DC link contacts ZK+ and ZK- (DC+ and DC-). The device is safe once the voltage has fallen below 50 V.

WARNING

Risk of injury!

Electronic equipment is not fail-safe. The machine manufacturer is responsible for ensuring that the connected motors and the machine are brought into a safe state in the event of a fault in the drive system.

3 Installing the mains filter

WARNING

Caution - Risk of injury through electric shock!

De-energize all electrical components (servo drive, control cabinet etc.) before commencing the installation or deinstallation of the mains filter.

WARNING

Caution - Risk of injury through electric shock!

Mains filters contain components that can store electrical charge. Wait 5 minutes after disconnecting the filters and measure the voltage on conductors L1 to L3. The device is safe once the voltage has fallen below 50 V.

CAUTION

Personal injuries!

When installing the mains filter, the protective earth cables must be connected first as a matter of principle. They must be disconnected last when deinstalling. Depending on the size of the leakage current, the special regulations for the implementation of the protective earth connection must be observed. Minimum requirement for the protective conductor KU-value ¹⁾ = 4.5 for leakage currents $I_L < 10 \text{ mA}$ or $KU = 6$ for $I_L > 10 \text{ mA}$.

¹⁾ The KU-value is a variable for the classification of safety-related types of failure for protection against dangerous shock current and excessive heating. A value of $KU = 4.5$ in relation to interruption is attained:

- with a permanently attached protective conductor $\geq 1.5 \text{ mm}^2$
- for protective conductor connection $\geq 2.5 \text{ mm}^2$ with plug connector for industrial systems (IEC 60309-2).

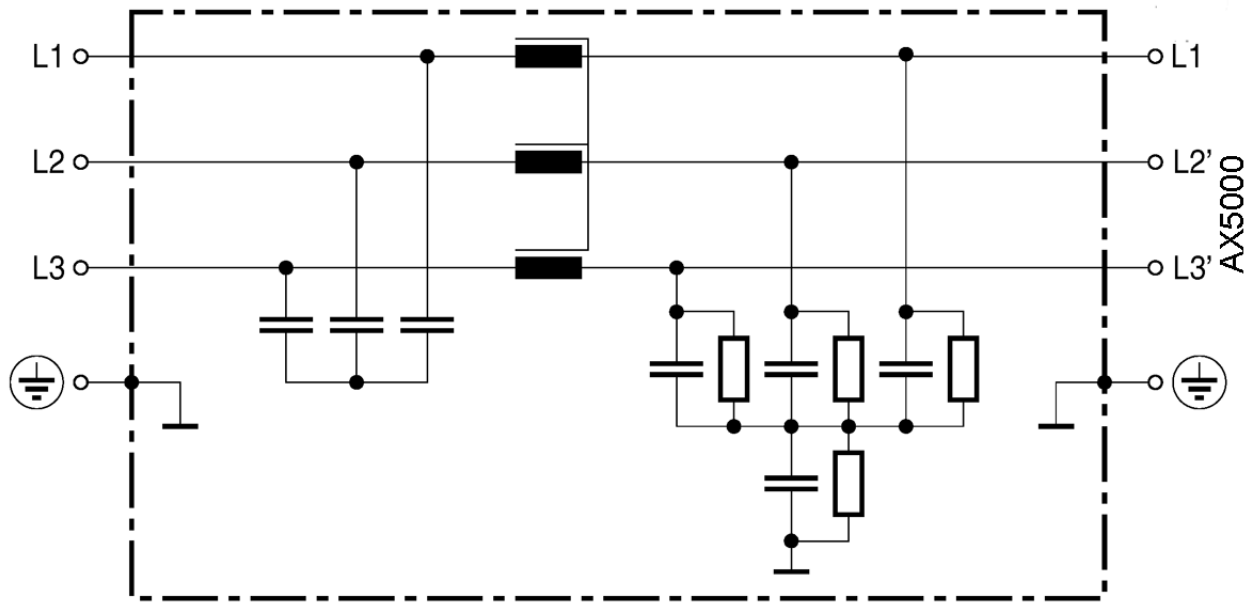
$KU = 6$ in relation to interruption is attained with permanently connected conductors $\geq 10 \text{ mm}^2$, wherein the type of connection and routing must comply with the standards applicable to PEN conductors.

NOTE

Destruction of the mains filter

The mains filters must be protected by means of an appropriate overcurrent protection device against the impermissible exceeding of the rated current.

3.1 Circuit diagram



Connection cables

The length of the connecting cable from the mains filter to the AX5000 must not exceed 0.4 m. Use exclusively shielded connecting cables.

3.2 Dimensions and dimensional drawings

| Dimensions | AX2090-NF50- | | | | | |
|-----------------------|---------------------|---------------------|--------|-------|-------|---------|
| | 0014 | 0032 | 0063 | 0100 | 0150 | 0180 |
| B1 [mm] | 38 _{.0.3} | 35 _{.0.3} | 40 | 45 | 60 | 180 |
| B2 [mm] | 46.4 | 58 | 62 | 75 | 90 | 200 |
| B3 [mm] | Ø 4.5 | | Ø 7 | | | Ø 8.5 |
| H1 [mm] | 70 | 90 | 180 | 200 | 220 | 120 |
| H2 [mm] | 1.5 | | -- | -- | -- | -- |
| K [mm ²] | 4 | 10 | 0.6-16 | 16-50 | 35-95 | Busbars |
| K1 [mm] | -- | -- | -- | -- | -- | 45 |
| K2 [mm] | -- | -- | -- | -- | -- | 86 |
| K3 [mm] | -- | -- | -- | -- | -- | 91 |
| L1 [mm] | 200 | | 240 | 250 | 280 | 160 |
| L2 [mm] | 231 | 265 | 280 | 290 | 320 | 310 |
| L3 [mm] | 221 _{.0.5} | 255 _{.0.5} | 270 | | 300 | 180 |
| L4 [mm] | -- | -- | 305 | 336 | 380 | 410 |
| PE1 [mm] | 60 | 70 | -- | -- | -- | 30 |
| PE2 [mm] | 9 | 8 | -- | -- | -- | -- |
| PE [mm ²] | M5 | | M6 | M8 | | M10 |
| T [Nm] | 0.5 – 0.6 | 1.2 – 1.5 | -- | -- | -- | -- |

| Figure | Mains filter |
|--------|---|
| | <p>AX2090-NF50-0014 AX2090-NF50-0032</p> |
| | <p>AX2090-NF50-0063 AX2090-NF50-0100 AX2090-NF50-0150</p> |
| | <p>AX2090-NF50-0180</p> |

4 Technical data

| Data | AX2090-NF-50- | | | | | |
|--|--|------|-------|-------|-------|-------|
| | 0014 | 0032 | 0063 | 0100 | 0150 | 0180 |
| Rated voltage [V _{AC}] | 480 | | | | | |
| Rated frequency [Hz] | 50 / 60 | | | | | |
| Rated current [A] | 14.6 | 32.8 | 63 | 100 | 150 | 180 |
| Voltage cable/cable for 2 sec. [V _{DC}] | 2236 | | -- | -- | -- | -- |
| Voltage cable/housing for 2 sec. [V _{DC}] | 2720 | | -- | -- | -- | -- |
| Rated temperature [°C] | 50 | | 40 | | | |
| Climate category (IEC 60068-1) | 25/100/21 | | -- | -- | -- | -- |
| Resistance [mΩ] | 9 | 4 | 0.577 | 0.817 | 0.477 | 0.113 |
| Leakage current [mA] | 15 | | 6.8 | 9.8 | | |
| Overload capability (thermal) | 1.5 x Rated current for 3 min per hour or 2.5 x Rated current for 30 s per hour | | | | | |
| Weight [kg] | 0.9 | 1.75 | 5.0 | 6.0 | 6.8 | 7.0 |
| Approvals | EN 133200, UL 1283, CSA C22.2 No.8 | | -- | -- | -- | -- |

5 Support and Service

Beckhoff and their partners around the world offer comprehensive support and service, making available fast and competent assistance with all questions related to Beckhoff products and system solutions.

Beckhoff's branch offices and representatives

Please contact your Beckhoff branch office or representative for [local support and service](#) on Beckhoff products!

The addresses of Beckhoff's branch offices and representatives round the world can be found on her internet pages:

<http://www.beckhoff.com>

You will also find further [documentation](#) for Beckhoff components there.

Beckhoff Headquarters

Beckhoff Automation GmbH & Co. KG

Huelshorstweg 20
33415 Verl
Germany

| | |
|---------|--|
| Phone: | +49(0)5246/963-0 |
| Fax: | +49(0)5246/963-198 |
| e-mail: | info@beckhoff.com |

Beckhoff Support

Support offers you comprehensive technical assistance, helping you not only with the application of individual Beckhoff products, but also with other, wide-ranging services:

- support
- design, programming and commissioning of complex automation systems
- and extensive training program for Beckhoff system components

| | |
|----------|--|
| Hotline: | +49(0)5246/963-157 |
| Fax: | +49(0)5246/963-9157 |
| e-mail: | support@beckhoff.com |

Beckhoff Service

The Beckhoff Service Center supports you in all matters of after-sales service:

- on-site service
- repair service
- spare parts service
- hotline service

| | |
|----------|--|
| Hotline: | +49(0)5246/963-460 |
| Fax: | +49(0)5246/963-479 |
| e-mail: | service@beckhoff.com |

More Information:
www.beckhoff.de/ax5000

Beckhoff Automation GmbH & Co. KG
Hülshorstweg 20
33415 Verl
Germany
Phone: +49 5246 9630
info@beckhoff.com
www.beckhoff.com

