

BECKHOFF New Automation Technology

Object Dictionary | EN

AX86x0

Power supply module

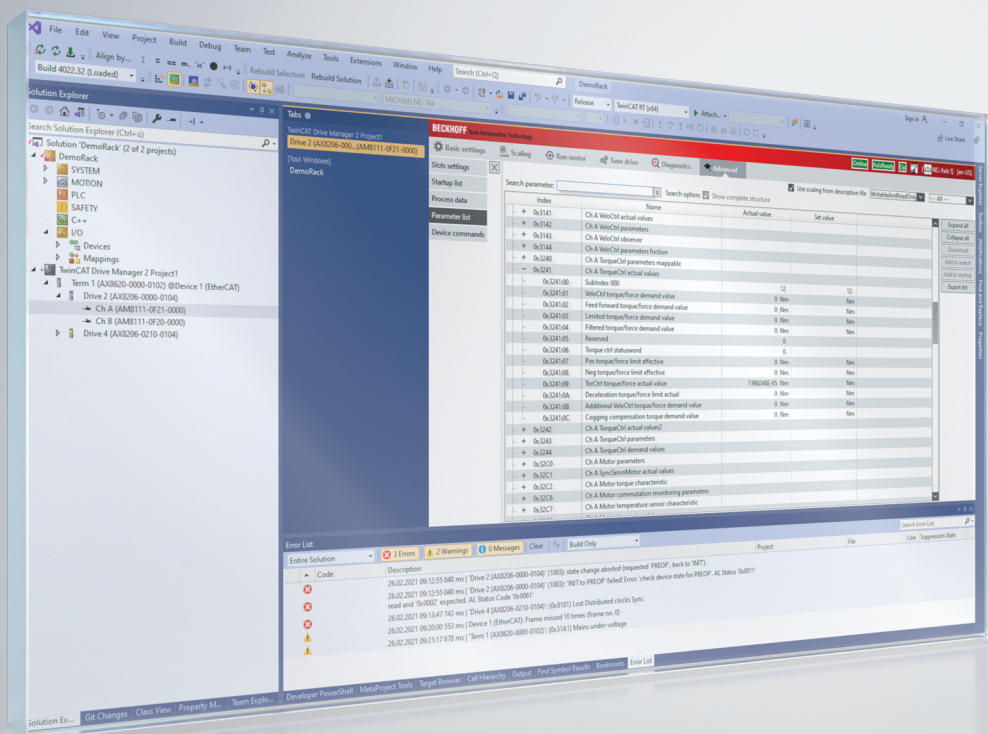


Table of Contents

1	Standard-Objects	11
1.1	1000 Device type	11
1.2	1008 Device name	12
1.3	1009 Hardware version	13
1.4	100A Software version	14
1.5	100B Bootloader version	15
1.6	1018:x Identity	16
1.6.1	1018:01 Vendor ID	16
1.6.2	1018:02 Product code	16
1.6.3	1018:03 Revision	17
1.6.4	1018:04 Serial number	17
1.7	10F3:x Diagnosis History	18
1.7.1	10F3:01 Maximum Messages	18
1.7.2	10F3:02 Newest Message	18
1.7.3	10F3:03 Newest Acknowledged Message	19
1.7.4	10F3:04 New Messages Available	19
1.7.5	10F3:05 Flags	19
1.7.6	10F3:06 Diagnosis Message 001	20
1.7.7	10F3:07 Diagnosis Message 002	20
1.7.8	10F3:08 Diagnosis Message 003	20
1.7.9	10F3:09 Diagnosis Message 004	21
1.7.10	10F3:0A Diagnosis Message 005	21
1.7.11	10F3:0B Diagnosis Message 006	21
1.7.12	10F3:0C Diagnosis Message 007	22
1.7.13	10F3:0D Diagnosis Message 008	22
1.7.14	10F3:0E Diagnosis Message 009	22
1.7.15	10F3:0F Diagnosis Message 010	23
1.7.16	10F3:10 Diagnosis Message 011	23
1.7.17	10F3:11 Diagnosis Message 012	23
1.7.18	10F3:12 Diagnosis Message 013	24
1.7.19	10F3:13 Diagnosis Message 014	24
1.7.20	10F3:14 Diagnosis Message 015	24
1.7.21	10F3:15 Diagnosis Message 016	25
1.7.22	10F3:16 Diagnosis Message 017	25
1.7.23	10F3:17 Diagnosis Message 018	25
1.7.24	10F3:18 Diagnosis Message 019	26
1.7.25	10F3:19 Diagnosis Message 020	26
1.7.26	10F3:1A Diagnosis Message 021	26
1.7.27	10F3:1B Diagnosis Message 022	27
1.7.28	10F3:1C Diagnosis Message 023	27
1.7.29	10F3:1D Diagnosis Message 024	27
1.7.30	10F3:1E Diagnosis Message 025	28
1.7.31	10F3:1F Diagnosis Message 026	28
1.7.32	10F3:20 Diagnosis Message 027	28

1.7.33	10F3:21 Diagnosis Message 028	29
1.7.34	10F3:22 Diagnosis Message 029	29
1.7.35	10F3:23 Diagnosis Message 030	29
1.7.36	10F3:24 Diagnosis Message 031	30
1.7.37	10F3:25 Diagnosis Message 032	30
1.7.38	10F3:26 Diagnosis Message 033	30
1.7.39	10F3:27 Diagnosis Message 034	31
1.7.40	10F3:28 Diagnosis Message 035	31
1.7.41	10F3:29 Diagnosis Message 036	31
1.7.42	10F3:2A Diagnosis Message 037	32
1.7.43	10F3:2B Diagnosis Message 038	32
1.7.44	10F3:2C Diagnosis Message 039	32
1.7.45	10F3:2D Diagnosis Message 040	33
1.8	10F8 Actual Time Stamp	34
1.9	1C00:x Sync manager type	35
1.9.1	1C00:01 SubIndex 001	35
1.9.2	1C00:02 SubIndex 002	35
1.9.3	1C00:03 SubIndex 003	36
1.9.4	1C00:04 SubIndex 004	36
1.10	1C12:x RxPDO assign	37
1.11	1C13:x TxPDO assign	38
1.11.1	1C13:01 Subindex 001	38
1.11.2	1C13:02 Subindex 002	38
1.11.3	1C13:03 Subindex 003	39
1.11.4	1C13:04 Subindex 004	39
1.11.5	1C13:05 Subindex 005	39
1.11.6	1C13:06 Subindex 006	40
1.11.7	1C13:07 Subindex 007	40
1.11.8	1C13:08 Subindex 008	40
1.12	1C33:x SM input parameter	41
1.12.1	1C33:01 Sync mode	41
1.12.2	1C33:02 Cycle time	41
1.12.3	1C33:03 Shift time	42
1.12.4	1C33:04 Sync modes supported	42
1.12.5	1C33:05 Minimum cycle time	42
1.12.6	1C33:06 Calc and copy time	43
1.12.7	1C33:07 Minimum delay time	43
1.12.8	1C33:08 Command	43
1.12.9	1C33:09 Maximum delay time	44
1.12.10	1C33:0B SM event missed counter	44
1.12.11	1C33:0C Cycle exceeded counter	44
1.12.12	1C33:0D Shift too short counter	45
1.12.13	1C33:20 Sync error	45
1.13	6000:x PSM Controlword for axis	46
1.13.1	6000:01 Non-generative brake order_n	46
1.13.2	6000:02 Ready to operate	46

1.13.3	6000:03 TorqueOFF order_n	47
1.13.4	6000:04 Generative brake order_n	47
1.13.5	6000:05 Limit dc link current_order_n	47
1.13.6	6000:06 NC handling_order_n	48
1.13.7	6000:0C Counter	48
1.14	6001:x PSM Actual process values 1	49
1.14.1	6001:01 Actual DC link voltage	49
1.14.2	6001:02 Actual mains voltage	49
1.15	6002:x PSM Actual process values 2	50
1.15.1	6002:01 Actual DC link current	50
1.15.2	6002:02 Actual motor load	50
1.16	6003:x PSM Actual process values 3	51
1.16.1	6003:01 Actual brake resistor continuous power	51
1.16.2	6003:02 Actual brake resistor short-time energy	51
1.17	6004:x PSM Warning register	52
1.17.1	6004:01 Warning__A0 Reserviert	52
1.17.2	6004:02 Warning__A1 Brake resistor power overload	52
1.17.3	6004:03 Warning__A2 Device overtemperature	53
1.17.4	6004:04 Warning__A3 DC link continuous overcurrent	53
1.17.5	6004:05 Warning__A4 Fan malfunction	53
1.17.6	6004:06 Warning__A5 Mains overvoltage	54
1.17.7	6004:07 Warning__A6 Mains undervoltage	54
1.18	6005:x PSM Diagnostics process data	55
1.18.1	6005:01 DcLink state machine	55
1.18.2	6005:02 Umains state machine	56
1.18.3	6005:03 Error code	56
1.19	6006:x PSM Memory interface data	57
1.19.1	6006:01 Data 1	57
1.19.2	6006:02 Data 2	57
1.20	6007:x PSM Statusword	58
1.20.1	6007:01 Ready to operate	58
1.20.2	6007:02 Error	58
1.20.3	6007:03 Warning	59
1.20.4	6007:04 Relays closed	59
1.20.5	6007:05 Brake chopper active	59
1.20.6	6007:06 Fan active	60
1.20.7	6007:07 Reserve 6	60
1.20.8	6007:08 Reserve 7	60
1.21	8000:x PSM Parameters	61
1.21.1	8000:01 DC link max voltage	61
1.21.2	8000:02 DC link continuous overcurrent warning threshold	61
1.21.3	8000:04 Mains type	62
1.21.4	8000:06 Mains voltage	62
1.21.5	8000:07 Mains voltage max tolerance	63
1.21.6	8000:08 Mains voltage min tolerance	63
1.21.7	8000:0A Device temperature warning threshold	63

1.21.8	8000:0B External brake resistor value	64
1.21.9	8000:0C External brake resistor continuous power	64
1.21.10	8000:0D Brake resistor power warning threshold	64
1.21.11	8000:0E Brake resistor connection mode	65
1.21.12	8000:10 Ext brake resistor overload factor at 1% duty cycle	65
1.21.13	8000:11 Control word	66
1.22	8001:x PSM Memory interface config	67
1.22.1	8001:01 Address 1	67
1.22.2	8001:02 Address 2	67
1.22.3	8001:05 Byte lenght 1	68
1.22.4	8001:06 Byte lenght 2	68
1.22.5	8001:07 Debug parameter	69
1.23	8002:x PSM Memory control	70
1.23.1	8002:01 Read error memory	70
1.23.2	8002:02 Reset error memory	70
1.23.3	8002:03 Write ids	71
1.23.4	8002:04 Write factory settings	71
1.23.5	8002:05 Reset operating time	71
1.23.6	8002:11 Data	72
1.23.7	8002:12 Data type	72
1.24	8003 PSM Reset errors	73
1.25	8004:x PSM Parameters error manager	74
1.25.1	8004:01 Choose force reaction	74
1.25.2	8004:02 Force reaction	75
1.26	8005:x PSM Factory settings	76
1.26.1	8005:01 DC link current scaling gain	76
1.26.2	8005:02 DC link current offset	76
1.26.3	8005:03 DC link voltage scaling gain	77
1.26.4	8005:04 DC link voltage offset	77
1.26.5	8005:05 Mains voltage scaling gain 1	77
1.26.6	8005:06 Mains voltage offset1	78
1.26.7	8005:07 Mains voltage scaling gain 2	78
1.26.8	8005:08 Mains voltage offset 2	78
1.26.9	8005:09 Mains voltage scaling gain 3	79
1.26.10	8005:0A Mains voltage offset 3	79
1.26.11	8005:10 Checksum	79
1.26.12	8005:11 Control word	80
1.26.13	8005:12 Rated brake resistor power	80
1.27	9002:x PSM Device ids	81
1.27.1	9002:01 Vendor id	81
1.27.2	9002:02 Product code	81
1.27.3	9002:03 Revision no	82
1.27.4	9002:04 Serial no	82
1.27.5	9002:05 Manufacturing date	82
1.27.6	9002:06 HW id 1	83
1.27.7	9002:0A HW id 2	83

1.27.8	9002:0B HW id 3.....	83
1.27.9	9002:0C HW id 4	84
1.27.10	9002:0D Free switch code 1	84
1.27.11	9002:0E Free switch code 2	84
1.27.12	9002:0F Checksum.....	85
1.28	9003:x PSM Pcb ids Pcb id 0	86
1.28.1	9003:01 Structure version.....	86
1.28.2	9003:02 Manufacturing date	86
1.28.3	9003:03 Hwld reserve.....	87
1.28.4	9003:04 Hwld Hardware type	87
1.28.5	9003:05 Hwld Feature flags.....	87
1.28.6	9003:06 Hwld Supplier	88
1.28.7	9003:07 Hwld Component type	88
1.28.8	9003:08 Hwld reserve 2.....	88
1.28.9	9003:09 Hwld Hardware index	89
1.28.10	9003:0A Hwld Pcb revision.....	89
1.28.11	9003:0B Hwld Pcb type	89
1.28.12	9003:0C Hwld Supported no of channels	90
1.28.13	9003:0D Hwld Firmware index	90
1.28.14	9003:0F DMC 1	90
1.28.15	9003:10 DMC 2.....	91
1.28.16	9003:11 DMC 3.....	91
1.28.17	9003:12 DMC 4.....	91
1.28.18	9003:13 DMC 5.....	92
1.28.19	9003:14 DMC 6.....	92
1.28.20	9003:15 DMC 7.....	92
1.28.21	9003:16 DMC 8.....	93
1.28.22	9003:17 DMC 9.....	93
1.28.23	9003:18 DMC 10.....	93
1.28.24	9003:1A Checksum	94
1.29	9004:x PSM Pcb ids Pcb id 1	95
1.29.1	9004:01 Structure version.....	95
1.29.2	9004:02 Manufacturing date	95
1.29.3	9004:03 Hwld reserve.....	96
1.29.4	9004:04 Hwld Hardware type	96
1.29.5	9004:05 Hwld Feature flags.....	96
1.29.6	9004:06 Hwld Supplier	97
1.29.7	9004:07 Hwld Component type	97
1.29.8	9004:08 Hwld reserve 2.....	97
1.29.9	9004:09 Hwld Hardware index	98
1.29.10	9004:0A Hwld Pcb revision.....	98
1.29.11	9004:0B Hwld Pcb type	98
1.29.12	9004:0C Hwld Supported no of channels	99
1.29.13	9004:0D Hwld Firmware index	99
1.29.14	9004:0F DMC 1	99
1.29.15	9004:10 DMC 2.....	100

1.29.16	9004:11 DMC 3.....	100
1.29.17	9004:12 DMC 4.....	100
1.29.18	9004:13 DMC 5.....	101
1.29.19	9004:14 DMC 6.....	101
1.29.20	9004:15 DMC 7.....	101
1.29.21	9004:16 DMC 8.....	102
1.29.22	9004:17 DMC 9.....	102
1.29.23	9004:18 DMC 10.....	102
1.29.24	9004:1A Checksum	103
1.30	9005:x PSM Pcb ids Pcb id 2	104
1.30.1	9005:01 Structure version.....	104
1.30.2	9005:02 Manufacturing date	104
1.30.3	9005:03 Hwld reserve.....	105
1.30.4	9005:04 Hwld Hardware type	105
1.30.5	9005:05 Hwld Feature flags.....	105
1.30.6	9005:06 Hwld Supplier	106
1.30.7	9005:07 Hwld Component type	106
1.30.8	9005:08 Hwld reserve 2.....	106
1.30.9	9005:09 Hwld Hardware index	107
1.30.10	9005:0A Hwld Pcb revision.....	107
1.30.11	9005:0B Hwld Pcb type	107
1.30.12	9005:0C Hwld Supported no of channels	108
1.30.13	9005:0D Hwld Firmware index	108
1.30.14	9005:0F DMC 1	108
1.30.15	9005:10 DMC 2.....	109
1.30.16	9005:11 DMC 3.....	109
1.30.17	9005:12 DMC 4.....	109
1.30.18	9005:13 DMC 5.....	110
1.30.19	9005:14 DMC 6.....	110
1.30.20	9005:15 DMC 7.....	110
1.30.21	9005:16 DMC 8.....	111
1.30.22	9005:17 DMC 9.....	111
1.30.23	9005:18 DMC 10.....	111
1.30.24	9005:1A Checksum	112
1.31	9006:x PSM Internal info	113
1.31.1	9006:01 DC link nominal current	113
1.31.2	9006:02 DC link peak overcurrent threshold	114
1.31.3	9006:03 24V-Supply nominal current	114
1.31.4	9006:04 Device max temperature.....	114
1.31.5	9006:05 Internal brake resistor value	115
1.31.6	9006:06 Internal brake resistor max power	115
1.31.7	9006:07 DC link max threshold voltage	115
1.31.8	9006:08 DC link min voltage	116
1.31.9	9006:09 Brake chopper switchOn threshold voltage	116
1.31.10	9006:0A Brake chopper switchOff threshold voltage.....	116
1.31.11	9006:0B Mains voltage max threshold.....	117

1.31.12	9006:0C Mains voltage min threshold	117
1.32	9007:x PSM Pcb ids Pcb id 3	118
1.32.1	9007:01 Structure version.....	118
1.32.2	9007:02 Manufacturing date	118
1.32.3	9007:03 Hwld reserve.....	119
1.32.4	9007:04 Hwld Hardware type	119
1.32.5	9007:05 Hwld Feature flags.....	119
1.32.6	9007:06 Hwld Supplier	120
1.32.7	9007:07 Hwld Component type	120
1.32.8	9007:08 Hwld reserve 2.....	120
1.32.9	9007:09 Hwld Hardware index	121
1.32.10	9007:0A Hwld Pcb revision.....	121
1.32.11	9007:0B Hwld Pcb type	121
1.32.12	9007:0C Hwld Supported no of channels	122
1.32.13	9007:0D Hwld Firmware index	122
1.32.14	9007:0F DMC 1	122
1.32.15	9007:10 DMC 2.....	123
1.32.16	9007:11 DMC 3.....	123
1.32.17	9007:12 DMC 4.....	123
1.32.18	9007:13 DMC 5.....	124
1.32.19	9007:14 DMC 6.....	124
1.32.20	9007:15 DMC 7.....	124
1.32.21	9007:16 DMC 8.....	125
1.32.22	9007:17 DMC 9.....	125
1.32.23	9007:18 DMC 10.....	125
1.32.24	9007:1A Checksum	126
1.33	A000:x PSM Actual internal values	127
1.33.1	A000:01 Operating time.....	127
1.33.2	A000:02 Actual device temperature.....	127
1.33.3	A000:03 Umains frequency	128
1.33.4	A000:04 Mains type	128
1.34	A001:x PSM Internal diagnostics.....	129
1.34.1	A001:01 EtherCAT ISR overflow	129
1.34.2	A001:02 User ISR overflow	129
1.34.3	A001:03 Main timeout.....	130
1.35	A002:x PSM Diagnostics	131
1.35.1	A002:01 Diagnostic number	131
1.36	F000:x Modular device profile	132
1.36.1	F000:01 Module index distance.....	132
1.36.2	F000:02 Maximum number of modules	132
1.37	F008 Code word	133
1.38	F010:x Module list	134
1.38.1	F010:01 SubIndex 001	134

1 Standard-Objects

1.1 1000 Device type

see ETG.1000.6 EtherCAT specification - CoE

Description	Value
Index	0x1000 (Device)
Subindex	0x00
Datatype	UINT32
Min. Value	
Default	62919561 (0x03C01389)
Max. Value	
Unit	
Access / EtherCAT-State	Ro
PDO Mapping	
Revision	All

1.2 1008 Device name

see ETG.1000.6 EtherCAT specification - CoE

Description	Value
Index	0x1008 (Device)
Subindex	0x00
Datatype	VISIBLE_STRING
Min. Value	
Default	AX8620-0000
Max. Value	
Unit	
Access / EtherCAT-State	Ro
PDO Mapping	
Revision	All

1.3 1009 Hardware version

see ETG.1000.6 EtherCAT specification - CoE

Description	Value
Index	0x1009 (Device)
Subindex	0x00
Datatype	VISIBLE_STRING
Min. Value	
Default	
Max. Value	
Unit	
Access / EtherCAT-State	Ro
PDO Mapping	
Revision	All

1.4 100A Software version

see ETG.1000.6 EtherCAT specification - CoE

Description	Value
Index	0x100A (Device)
Subindex	0x00
Datatype	VISIBLE_STRING
Min. Value	
Default	00
Max. Value	
Unit	
Access / EtherCAT-State	Ro
PDO Mapping	
Revision	All

1.5 100B Bootloader version

see ETG.1000.6 EtherCAT specification - CoE

Description	Value
Index	0x100B (Device)
Subindex	0x00
Datatype	VISIBLE_STRING
Min. Value	
Default	N/A
Max. Value	
Unit	
Access / EtherCAT-State	Ro
PDO Mapping	
Revision	All

1.6 1018:x Identity

see ETG.1000.6 EtherCAT specification - CoE

Description	Value
Index	0x1018 (Device)
Subindex	0x00
Datatype	UINT8
Min. Value	
Default	4 (0x04)
Max. Value	
Unit	
Access / EtherCAT-State	Ro
PDO Mapping	
Revision	All

1.6.1 1018:01 Vendor ID

see ETG.1000.6 EtherCAT specification - CoE

Description	Value
Index	0x1018 (Device)
Subindex	0x01
Datatype	UINT32
Min. Value	
Default	2 (0x00000002)
Max. Value	
Unit	
Access / EtherCAT-State	Ro
PDO Mapping	
Revision	All

1.6.2 1018:02 Product code

see ETG.1000.6 EtherCAT specification - CoE

Description	Value
Index	0x1018 (Device)
Subindex	0x02
Datatype	UINT32
Min. Value	
Default	564944914 (0x21AC6012)
Max. Value	
Unit	
Access / EtherCAT-State	Ro
PDO Mapping	
Revision	All

1.6.3 1018:03 Revision

see ETG.1000.6 EtherCAT specification - CoE

Description	Value
Index	0x1018 (Device)
Subindex	0x03
Datatype	UINT32
Min. Value	
Default	
Max. Value	
Unit	
Access / EtherCAT-State	Ro
PDO Mapping	
Revision	All

1.6.4 1018:04 Serial number

see ETG.1000.6 EtherCAT specification - CoE

Description	Value
Index	0x1018 (Device)
Subindex	0x04
Datatype	UINT32
Min. Value	
Default	
Max. Value	
Unit	
Access / EtherCAT-State	Ro
PDO Mapping	
Revision	All

1.7 10F3:x Diagnosis History

see ETG.1020 Protocol Enhancements

Description	Value
Index	0x10F3 (Device)
Subindex	0x00
Datatype	UINT8
Min. Value	
Default	45 (0x2D)
Max. Value	
Unit	
Access / EtherCAT-State	Ro
PDO Mapping	
Revision	All

1.7.1 10F3:01 Maximum Messages

see ETG.1020 Protocol Enhancements

Description	Value
Index	0x10F3 (Device)
Subindex	0x01
Datatype	UINT8
Min. Value	
Default	
Max. Value	
Unit	
Access / EtherCAT-State	Ro
PDO Mapping	
Revision	All

1.7.2 10F3:02 Newest Message

see ETG.1020 Protocol Enhancements

Description	Value
Index	0x10F3 (Device)
Subindex	0x02
Datatype	UINT8
Min. Value	
Default	
Max. Value	
Unit	
Access / EtherCAT-State	Ro
PDO Mapping	
Revision	All

1.7.3 10F3:03 Newest Acknowledged Message

see ETG.1020 Protocol Enhancements

Description	Value
Index	0x10F3 (Device)
Subindex	0x03
Datatype	UINT8
Min. Value	
Default	
Max. Value	
Unit	
Access / EtherCAT-State	Rw
PDO Mapping	
Revision	All

1.7.4 10F3:04 New Messages Available

see ETG.1020 Protocol Enhancements

Description	Value
Index	0x10F3 (Device)
Subindex	0x04
Datatype	BOOL
Min. Value	
Default	
Max. Value	
Unit	
Access / EtherCAT-State	Ro
PDO Mapping	
Revision	All

1.7.5 10F3:05 Flags

see ETG.1020 Protocol Enhancements

Description	Value
Index	0x10F3 (Device)
Subindex	0x05
Datatype	UINT16
Min. Value	
Default	
Max. Value	
Unit	
Access / EtherCAT-State	Rw
PDO Mapping	
Revision	All

1.7.6 10F3:06 Diagnosis Message 001

see ETG.1020 Protocol Enhancements

Description	Value
Index	0x10F3 (Device)
Subindex	0x06
Datatype	OCTET_STRING
Min. Value	
Default	
Max. Value	
Unit	
Access / EtherCAT-State	Ro
PDO Mapping	
Revision	All

1.7.7 10F3:07 Diagnosis Message 002

see ETG.1020 Protocol Enhancements

Description	Value
Index	0x10F3 (Device)
Subindex	0x07
Datatype	OCTET_STRING
Min. Value	
Default	
Max. Value	
Unit	
Access / EtherCAT-State	Ro
PDO Mapping	
Revision	All

1.7.8 10F3:08 Diagnosis Message 003

see ETG.1020 Protocol Enhancements

Description	Value
Index	0x10F3 (Device)
Subindex	0x08
Datatype	OCTET_STRING
Min. Value	
Default	
Max. Value	
Unit	
Access / EtherCAT-State	Ro
PDO Mapping	
Revision	All

1.7.9 10F3:09 Diagnosis Message 004

see ETG.1020 Protocol Enhancements

Description	Value
Index	0x10F3 (Device)
Subindex	0x09
Datatype	OCTET_STRING
Min. Value	
Default	
Max. Value	
Unit	
Access / EtherCAT-State	Ro
PDO Mapping	
Revision	All

1.7.10 10F3:0A Diagnosis Message 005

see ETG.1020 Protocol Enhancements

Description	Value
Index	0x10F3 (Device)
Subindex	0x0A
Datatype	OCTET_STRING
Min. Value	
Default	
Max. Value	
Unit	
Access / EtherCAT-State	Ro
PDO Mapping	
Revision	All

1.7.11 10F3:0B Diagnosis Message 006

see ETG.1020 Protocol Enhancements

Description	Value
Index	0x10F3 (Device)
Subindex	0x0B
Datatype	OCTET_STRING
Min. Value	
Default	
Max. Value	
Unit	
Access / EtherCAT-State	Ro
PDO Mapping	
Revision	All

1.7.12 10F3:0C Diagnosis Message 007

see ETG.1020 Protocol Enhancements

Description	Value
Index	0x10F3 (Device)
Subindex	0x0C
Datatype	OCTET_STRING
Min. Value	
Default	
Max. Value	
Unit	
Access / EtherCAT-State	Ro
PDO Mapping	
Revision	All

1.7.13 10F3:0D Diagnosis Message 008

see ETG.1020 Protocol Enhancements

Description	Value
Index	0x10F3 (Device)
Subindex	0x0D
Datatype	OCTET_STRING
Min. Value	
Default	
Max. Value	
Unit	
Access / EtherCAT-State	Ro
PDO Mapping	
Revision	All

1.7.14 10F3:0E Diagnosis Message 009

see ETG.1020 Protocol Enhancements

Description	Value
Index	0x10F3 (Device)
Subindex	0x0E
Datatype	OCTET_STRING
Min. Value	
Default	
Max. Value	
Unit	
Access / EtherCAT-State	Ro
PDO Mapping	
Revision	All

1.7.15 10F3:0F Diagnosis Message 010

see ETG.1020 Protocol Enhancements

Description	Value
Index	0x10F3 (Device)
Subindex	0x0F
Datatype	OCTET_STRING
Min. Value	
Default	
Max. Value	
Unit	
Access / EtherCAT-State	Ro
PDO Mapping	
Revision	All

1.7.16 10F3:10 Diagnosis Message 011

see ETG.1020 Protocol Enhancements

Description	Value
Index	0x10F3 (Device)
Subindex	0x10
Datatype	OCTET_STRING
Min. Value	
Default	
Max. Value	
Unit	
Access / EtherCAT-State	Ro
PDO Mapping	
Revision	All

1.7.17 10F3:11 Diagnosis Message 012

see ETG.1020 Protocol Enhancements

Description	Value
Index	0x10F3 (Device)
Subindex	0x11
Datatype	OCTET_STRING
Min. Value	
Default	
Max. Value	
Unit	
Access / EtherCAT-State	Ro
PDO Mapping	
Revision	All

1.7.18 10F3:12 Diagnosis Message 013

see ETG.1020 Protocol Enhancements

Description	Value
Index	0x10F3 (Device)
Subindex	0x12
Datatype	OCTET_STRING
Min. Value	
Default	
Max. Value	
Unit	
Access / EtherCAT-State	Ro
PDO Mapping	
Revision	All

1.7.19 10F3:13 Diagnosis Message 014

see ETG.1020 Protocol Enhancements

Description	Value
Index	0x10F3 (Device)
Subindex	0x13
Datatype	OCTET_STRING
Min. Value	
Default	
Max. Value	
Unit	
Access / EtherCAT-State	Ro
PDO Mapping	
Revision	All

1.7.20 10F3:14 Diagnosis Message 015

see ETG.1020 Protocol Enhancements

Description	Value
Index	0x10F3 (Device)
Subindex	0x14
Datatype	OCTET_STRING
Min. Value	
Default	
Max. Value	
Unit	
Access / EtherCAT-State	Ro
PDO Mapping	
Revision	All

1.7.21 10F3:15 Diagnosis Message 016

see ETG.1020 Protocol Enhancements

Description	Value
Index	0x10F3 (Device)
Subindex	0x15
Datatype	OCTET_STRING
Min. Value	
Default	
Max. Value	
Unit	
Access / EtherCAT-State	Ro
PDO Mapping	
Revision	All

1.7.22 10F3:16 Diagnosis Message 017

see ETG.1020 Protocol Enhancements

Description	Value
Index	0x10F3 (Device)
Subindex	0x16
Datatype	OCTET_STRING
Min. Value	
Default	
Max. Value	
Unit	
Access / EtherCAT-State	Ro
PDO Mapping	
Revision	All

1.7.23 10F3:17 Diagnosis Message 018

see ETG.1020 Protocol Enhancements

Description	Value
Index	0x10F3 (Device)
Subindex	0x17
Datatype	OCTET_STRING
Min. Value	
Default	
Max. Value	
Unit	
Access / EtherCAT-State	Ro
PDO Mapping	
Revision	All

1.7.24 10F3:18 Diagnosis Message 019

see ETG.1020 Protocol Enhancements

Description	Value
Index	0x10F3 (Device)
Subindex	0x18
Datatype	OCTET_STRING
Min. Value	
Default	
Max. Value	
Unit	
Access / EtherCAT-State	Ro
PDO Mapping	
Revision	All

1.7.25 10F3:19 Diagnosis Message 020

see ETG.1020 Protocol Enhancements

Description	Value
Index	0x10F3 (Device)
Subindex	0x19
Datatype	OCTET_STRING
Min. Value	
Default	
Max. Value	
Unit	
Access / EtherCAT-State	Ro
PDO Mapping	
Revision	All

1.7.26 10F3:1A Diagnosis Message 021

see ETG.1020 Protocol Enhancements

Description	Value
Index	0x10F3 (Device)
Subindex	0x1A
Datatype	OCTET_STRING
Min. Value	
Default	
Max. Value	
Unit	
Access / EtherCAT-State	Ro
PDO Mapping	
Revision	All

1.7.27 10F3:1B Diagnosis Message 022

see ETG.1020 Protocol Enhancements

Description	Value
Index	0x10F3 (Device)
Subindex	0x1B
Datatype	OCTET_STRING
Min. Value	
Default	
Max. Value	
Unit	
Access / EtherCAT-State	Ro
PDO Mapping	
Revision	All

1.7.28 10F3:1C Diagnosis Message 023

see ETG.1020 Protocol Enhancements

Description	Value
Index	0x10F3 (Device)
Subindex	0x1C
Datatype	OCTET_STRING
Min. Value	
Default	
Max. Value	
Unit	
Access / EtherCAT-State	Ro
PDO Mapping	
Revision	All

1.7.29 10F3:1D Diagnosis Message 024

see ETG.1020 Protocol Enhancements

Description	Value
Index	0x10F3 (Device)
Subindex	0x1D
Datatype	OCTET_STRING
Min. Value	
Default	
Max. Value	
Unit	
Access / EtherCAT-State	Ro
PDO Mapping	
Revision	All

1.7.30 10F3:1E Diagnosis Message 025

see ETG.1020 Protocol Enhancements

Description	Value
Index	0x10F3 (Device)
Subindex	0x1E
Datatype	OCTET_STRING
Min. Value	
Default	
Max. Value	
Unit	
Access / EtherCAT-State	Ro
PDO Mapping	
Revision	All

1.7.31 10F3:1F Diagnosis Message 026

see ETG.1020 Protocol Enhancements

Description	Value
Index	0x10F3 (Device)
Subindex	0x1F
Datatype	OCTET_STRING
Min. Value	
Default	
Max. Value	
Unit	
Access / EtherCAT-State	Ro
PDO Mapping	
Revision	All

1.7.32 10F3:20 Diagnosis Message 027

see ETG.1020 Protocol Enhancements

Description	Value
Index	0x10F3 (Device)
Subindex	0x20
Datatype	OCTET_STRING
Min. Value	
Default	
Max. Value	
Unit	
Access / EtherCAT-State	Ro
PDO Mapping	
Revision	All

1.7.33 10F3:21 Diagnosis Message 028

see ETG.1020 Protocol Enhancements

Description	Value
Index	0x10F3 (Device)
Subindex	0x21
Datatype	OCTET_STRING
Min. Value	
Default	
Max. Value	
Unit	
Access / EtherCAT-State	Ro
PDO Mapping	
Revision	All

1.7.34 10F3:22 Diagnosis Message 029

see ETG.1020 Protocol Enhancements

Description	Value
Index	0x10F3 (Device)
Subindex	0x22
Datatype	OCTET_STRING
Min. Value	
Default	
Max. Value	
Unit	
Access / EtherCAT-State	Ro
PDO Mapping	
Revision	All

1.7.35 10F3:23 Diagnosis Message 030

see ETG.1020 Protocol Enhancements

Description	Value
Index	0x10F3 (Device)
Subindex	0x23
Datatype	OCTET_STRING
Min. Value	
Default	
Max. Value	
Unit	
Access / EtherCAT-State	Ro
PDO Mapping	
Revision	All

1.7.36 10F3:24 Diagnosis Message 031

see ETG.1020 Protocol Enhancements

Description	Value
Index	0x10F3 (Device)
Subindex	0x24
Datatype	OCTET_STRING
Min. Value	
Default	
Max. Value	
Unit	
Access / EtherCAT-State	Ro
PDO Mapping	
Revision	All

1.7.37 10F3:25 Diagnosis Message 032

see ETG.1020 Protocol Enhancements

Description	Value
Index	0x10F3 (Device)
Subindex	0x25
Datatype	OCTET_STRING
Min. Value	
Default	
Max. Value	
Unit	
Access / EtherCAT-State	Ro
PDO Mapping	
Revision	All

1.7.38 10F3:26 Diagnosis Message 033

see ETG.1020 Protocol Enhancements

Description	Value
Index	0x10F3 (Device)
Subindex	0x26
Datatype	OCTET_STRING
Min. Value	
Default	
Max. Value	
Unit	
Access / EtherCAT-State	Ro
PDO Mapping	
Revision	All

1.7.39 10F3:27 Diagnosis Message 034

see ETG.1020 Protocol Enhancements

Description	Value
Index	0x10F3 (Device)
Subindex	0x27
Datatype	OCTET_STRING
Min. Value	
Default	
Max. Value	
Unit	
Access / EtherCAT-State	Ro
PDO Mapping	
Revision	All

1.7.40 10F3:28 Diagnosis Message 035

see ETG.1020 Protocol Enhancements

Description	Value
Index	0x10F3 (Device)
Subindex	0x28
Datatype	OCTET_STRING
Min. Value	
Default	
Max. Value	
Unit	
Access / EtherCAT-State	Ro
PDO Mapping	
Revision	All

1.7.41 10F3:29 Diagnosis Message 036

see ETG.1020 Protocol Enhancements

Description	Value
Index	0x10F3 (Device)
Subindex	0x29
Datatype	OCTET_STRING
Min. Value	
Default	
Max. Value	
Unit	
Access / EtherCAT-State	Ro
PDO Mapping	
Revision	All

1.7.42 10F3:2A Diagnosis Message 037

see ETG.1020 Protocol Enhancements

Description	Value
Index	0x10F3 (Device)
Subindex	0x2A
Datatype	OCTET_STRING
Min. Value	
Default	
Max. Value	
Unit	
Access / EtherCAT-State	Ro
PDO Mapping	
Revision	All

1.7.43 10F3:2B Diagnosis Message 038

see ETG.1020 Protocol Enhancements

Description	Value
Index	0x10F3 (Device)
Subindex	0x2B
Datatype	OCTET_STRING
Min. Value	
Default	
Max. Value	
Unit	
Access / EtherCAT-State	Ro
PDO Mapping	
Revision	All

1.7.44 10F3:2C Diagnosis Message 039

see ETG.1020 Protocol Enhancements

Description	Value
Index	0x10F3 (Device)
Subindex	0x2C
Datatype	OCTET_STRING
Min. Value	
Default	
Max. Value	
Unit	
Access / EtherCAT-State	Ro
PDO Mapping	
Revision	All

1.7.45 10F3:2D Diagnosis Message 040

see ETG.1020 Protocol Enhancements

Description	Value
Index	0x10F3 (Device)
Subindex	0x2D
Datatype	OCTET_STRING
Min. Value	
Default	
Max. Value	
Unit	
Access / EtherCAT-State	Ro
PDO Mapping	
Revision	All

1.8 10F8 Actual Time Stamp

see ETG.1000.6 EtherCAT specification - CoE

Description	Value
Index	0x10F8 (Device)
Subindex	0x00
Datatype	UINT64
Min. Value	
Default	
Max. Value	
Unit	ns
Access / EtherCAT-State	Ro
PDO Mapping	
Revision	All

1.9 1C00:x Sync manager type

see ETG.1000.6 EtherCAT specification - CoE

Description	Value
Index	0x1C00 (Device)
Subindex	0x00
Datatype	UINT8
Min. Value	
Default	4 (0x04)
Max. Value	
Unit	
Access / EtherCAT-State	Ro
PDO Mapping	
Revision	All

1.9.1 1C00:01 SubIndex 001

see ETG.1000.6 EtherCAT specification - CoE

Description	Value
Index	0x1C00 (Device)
Subindex	0x01
Datatype	UINT8
Min. Value	
Default	1 (0x01)
Max. Value	
Unit	
Access / EtherCAT-State	Ro
PDO Mapping	
Revision	All

1.9.2 1C00:02 SubIndex 002

see ETG.1000.6 EtherCAT specification - CoE

Description	Value
Index	0x1C00 (Device)
Subindex	0x02
Datatype	UINT8
Min. Value	
Default	2 (0x02)
Max. Value	
Unit	
Access / EtherCAT-State	Ro
PDO Mapping	
Revision	All

1.9.3 1C00:03 SubIndex 003

see ETG.1000.6 EtherCAT specification - CoE

Description	Value
Index	0x1C00 (Device)
Subindex	0x03
Datatype	UINT8
Min. Value	
Default	3 (0x03)
Max. Value	
Unit	
Access / EtherCAT-State	Ro
PDO Mapping	
Revision	All

1.9.4 1C00:04 SubIndex 004

see ETG.1000.6 EtherCAT specification - CoE

Description	Value
Index	0x1C00 (Device)
Subindex	0x04
Datatype	UINT8
Min. Value	
Default	4 (0x04)
Max. Value	
Unit	
Access / EtherCAT-State	Ro
PDO Mapping	
Revision	All

1.10 1C12:x RxPDO assign

see ETG.1000.6 EtherCAT specification - CoE

Description	Value
Index	0x1C12 (Device)
Subindex	0x00
Datatype	UINT8
Min. Value	
Default	
Max. Value	
Unit	
Access / EtherCAT-State	Rw / PreOp
PDO Mapping	
Revision	All

1.11 1C13:x TxPDO assign

see ETG.1000.6 EtherCAT specification - CoE

Description	Value
Index	0x1C13 (Device)
Subindex	0x00
Datatype	UINT8
Min. Value	
Default	
Max. Value	
Unit	
Access / EtherCAT-State	Rw / PreOp
PDO Mapping	
Revision	All

1.11.1 1C13:01 Subindex 001

see ETG.1000.6 EtherCAT specification - CoE

Description	Value
Index	0x1C13 (Device)
Subindex	0x01
Datatype	UINT16
Min. Value	
Default	6656 (0x1A00)
Max. Value	
Unit	
Access / EtherCAT-State	Rw / PreOp
PDO Mapping	
Revision	All

1.11.2 1C13:02 Subindex 002

see ETG.1000.6 EtherCAT specification - CoE

Description	Value
Index	0x1C13 (Device)
Subindex	0x02
Datatype	UINT16
Min. Value	
Default	0
Max. Value	
Unit	
Access / EtherCAT-State	Rw / PreOp
PDO Mapping	
Revision	All

1.11.3 1C13:03 Subindex 003

see ETG.1000.6 EtherCAT specification - CoE

Description	Value
Index	0x1C13 (Device)
Subindex	0x03
Datatype	UINT16
Min. Value	
Default	0
Max. Value	
Unit	
Access / EtherCAT-State	Rw / PreOp
PDO Mapping	
Revision	All

1.11.4 1C13:04 Subindex 004

see ETG.1000.6 EtherCAT specification - CoE

Description	Value
Index	0x1C13 (Device)
Subindex	0x04
Datatype	UINT16
Min. Value	
Default	0
Max. Value	
Unit	
Access / EtherCAT-State	Rw / PreOp
PDO Mapping	
Revision	All

1.11.5 1C13:05 Subindex 005

see ETG.1000.6 EtherCAT specification - CoE

Description	Value
Index	0x1C13 (Device)
Subindex	0x05
Datatype	UINT16
Min. Value	
Default	0
Max. Value	
Unit	
Access / EtherCAT-State	Rw / PreOp
PDO Mapping	
Revision	All

1.11.6 1C13:06 Subindex 006

see ETG.1000.6 EtherCAT specification - CoE

Description	Value
Index	0x1C13 (Device)
Subindex	0x06
Datatype	UINT16
Min. Value	
Default	0
Max. Value	
Unit	
Access / EtherCAT-State	Rw / PreOp
PDO Mapping	
Revision	All

1.11.7 1C13:07 Subindex 007

see ETG.1000.6 EtherCAT specification - CoE

Description	Value
Index	0x1C13 (Device)
Subindex	0x07
Datatype	UINT16
Min. Value	
Default	0
Max. Value	
Unit	
Access / EtherCAT-State	Rw / PreOp
PDO Mapping	
Revision	All

1.11.8 1C13:08 Subindex 008

see ETG.1000.6 EtherCAT specification - CoE

Description	Value
Index	0x1C13 (Device)
Subindex	0x08
Datatype	UINT16
Min. Value	
Default	0
Max. Value	
Unit	
Access / EtherCAT-State	Rw / PreOp
PDO Mapping	
Revision	All

1.12 1C33:x SM input parameter

see ETG.1000.6 EtherCAT specification - CoE

Description	Value
Index	0x1C33 (Device)
Subindex	0x00
Datatype	UINT8
Min. Value	
Default	32 (0x20)
Max. Value	
Unit	
Access / EtherCAT-State	Ro
PDO Mapping	
Revision	All

1.12.1 1C33:01 Sync mode

see ETG.1000.6 EtherCAT specification - CoE

Description	Value
Index	0x1C33 (Device)
Subindex	0x01
Datatype	UINT16
Min. Value	
Default	2 (0x0002)
Max. Value	
Unit	
Access / EtherCAT-State	Rw
PDO Mapping	
Revision	All

1.12.2 1C33:02 Cycle time

see ETG.1000.6 EtherCAT specification - CoE

Description	Value
Index	0x1C33 (Device)
Subindex	0x02
Datatype	UINT32
Min. Value	
Default	125000 (0x0001E848)
Max. Value	
Unit	
Access / EtherCAT-State	Rw
PDO Mapping	
Revision	All

1.12.3 1C33:03 Shift time

see ETG.1000.6 EtherCAT specification - CoE

Description	Value
Index	0x1C33 (Device)
Subindex	0x03
Datatype	UINT32
Min. Value	
Default	900 (0x00000384)
Max. Value	
Unit	
Access / EtherCAT-State	Ro
PDO Mapping	
Revision	All

1.12.4 1C33:04 Sync modes supported

see ETG.1000.6 EtherCAT specification - CoE

Description	Value
Index	0x1C33 (Device)
Subindex	0x04
Datatype	UINT16
Min. Value	
Default	2052 (0x0804)
Max. Value	
Unit	
Access / EtherCAT-State	Ro
PDO Mapping	
Revision	All

1.12.5 1C33:05 Minimum cycle time

see ETG.1000.6 EtherCAT specification - CoE

Description	Value
Index	0x1C33 (Device)
Subindex	0x05
Datatype	UINT32
Min. Value	
Default	62500 (0x0000F424)
Max. Value	
Unit	
Access / EtherCAT-State	Ro
PDO Mapping	
Revision	All

1.12.6 1C33:06 Calc and copy time

see ETG.1000.6 EtherCAT specification - CoE

Description	Value
Index	0x1C33 (Device)
Subindex	0x06
Datatype	UINT32
Min. Value	
Default	62500 (0x0000F424)
Max. Value	
Unit	
Access / EtherCAT-State	Ro
PDO Mapping	
Revision	All

1.12.7 1C33:07 Minimum delay time

see ETG.1000.6 EtherCAT specification - CoE

Description	Value
Index	0x1C33 (Device)
Subindex	0x07
Datatype	UINT32
Min. Value	
Default	900 (0x00000384)
Max. Value	
Unit	
Access / EtherCAT-State	Ro
PDO Mapping	
Revision	All

1.12.8 1C33:08 Command

see ETG.1000.6 EtherCAT specification - CoE

Description	Value
Index	0x1C33 (Device)
Subindex	0x08
Datatype	UINT16
Min. Value	
Default	0
Max. Value	
Unit	
Access / EtherCAT-State	Rw
PDO Mapping	
Revision	All

1.12.9 1C33:09 Maximum delay time

see ETG.1000.6 EtherCAT specification - CoE

Description	Value
Index	0x1C33 (Device)
Subindex	0x09
Datatype	UINT32
Min. Value	
Default	900 (0x00000384)
Max. Value	
Unit	
Access / EtherCAT-State	Ro
PDO Mapping	
Revision	All

1.12.10 1C33:0B SM event missed counter

see ETG.1000.6 EtherCAT specification - CoE

Description	Value
Index	0x1C33 (Device)
Subindex	0x0B
Datatype	UINT16
Min. Value	
Default	
Max. Value	
Unit	
Access / EtherCAT-State	Ro
PDO Mapping	
Revision	All

1.12.11 1C33:0C Cycle exceeded counter

see ETG.1000.6 EtherCAT specification - CoE

Description	Value
Index	0x1C33 (Device)
Subindex	0x0C
Datatype	UINT16
Min. Value	
Default	
Max. Value	
Unit	
Access / EtherCAT-State	Ro
PDO Mapping	
Revision	All

1.12.12 1C33:0D Shift too short counter

see ETG.1000.6 EtherCAT specification - CoE

Description	Value
Index	0x1C33 (Device)
Subindex	0x0D
Datatype	UINT16
Min. Value	
Default	
Max. Value	
Unit	
Access / EtherCAT-State	Ro
PDO Mapping	
Revision	All

1.12.13 1C33:20 Sync error

see ETG.1000.6 EtherCAT specification - CoE

Description	Value
Index	0x1C33 (Device)
Subindex	0x20
Datatype	BOOL
Min. Value	
Default	
Max. Value	
Unit	
Access / EtherCAT-State	Ro
PDO Mapping	
Revision	All

1.13 6000:x PSM Controlword for axis

Description	Value
Index	0x6000 (Device)
Subindex	0x00
Datatype	UINT8
Min. Value	
Default	12 (0x0C)
Max. Value	
Unit	
Access / EtherCAT-State	Ro
PDO Mapping	
Revision	All

1.13.1 6000:01 Non-generative brake order_n

Order for the axis to brake without generating energy back in the power supply module. Active low

Description	Value
Index	0x6000 (Device)
Subindex	0x01
Datatype	BOOL
Min. Value	
Default	
Max. Value	
Unit	
Access / EtherCAT-State	Ro
PDO Mapping	Transmit
Revision	All

1.13.2 6000:02 Ready to operate

High if no errors, mains voltage between tolerances, dc link loaded and relays closed. It allows the axis to be enabled. If this gets low in operation, the axis do not be disabled but rather it avoids the axis to be enabled again.

Description	Value
Index	0x6000 (Device)
Subindex	0x02
Datatype	BOOL
Min. Value	
Default	
Max. Value	
Unit	
Access / EtherCAT-State	Ro
PDO Mapping	Transmit
Revision	All

1.13.3 6000:03 TorqueOFF order_n

Order for the axis to switch off the torque. Active low

Description	Value
Index	0x6000 (Device)
Subindex	0x03
Datatype	BOOL
Min. Value	
Default	
Max. Value	
Unit	
Access / EtherCAT-State	Ro
PDO Mapping	Transmit
Revision	All

1.13.4 6000:04 Generative brake order_n

Order for the axis to brake without demanding energy from the DcLink. Active low

Description	Value
Index	0x6000 (Device)
Subindex	0x04
Datatype	BOOL
Min. Value	
Default	
Max. Value	
Unit	
Access / EtherCAT-State	Ro
PDO Mapping	Transmit
Revision	All

1.13.5 6000:05 Limit dc link current_order_n

Order for the axis to limit the requested current from the DC link. Active low. Cause: Motoric load (6001:04) greater than 102%.

Description	Value
Index	0x6000 (Device)
Subindex	0x05
Datatype	BOOL
Min. Value	
Default	
Max. Value	
Unit	
Access / EtherCAT-State	Ro
PDO Mapping	Transmit
Revision	All

1.13.6 6000:06 NC handling_order_n

Order for the NC to handle. Active low

Description	Value
Index	0x6000 (Device)
Subindex	0x06
Datatype	BOOL
Min. Value	
Default	
Max. Value	
Unit	
Access / EtherCAT-State	Ro
PDO Mapping	Transmit
Revision	All

1.13.7 6000:0C Counter

Sign for the axis, that the power supply module is in SAFEOP or OP.

Description	Value
Index	0x6000 (Device)
Subindex	0x0C
Datatype	BIT5
Min. Value	
Default	
Max. Value	
Unit	
Access / EtherCAT-State	Ro
PDO Mapping	Transmit
Revision	All

1.14 6001:x PSM Actual process values 1

Description	Value
Index	0x6001 (Device)
Subindex	0x00
Datatype	UINT8
Min. Value	
Default	2 (0x02)
Max. Value	
Unit	
Access / EtherCAT-State	Ro
PDO Mapping	
Revision	All

1.14.1 6001:01 Actual DC link voltage

Actual voltage value at the DC link.

Description	Value
Index	0x6001 (Device)
Subindex	0x01
Datatype	UINT32
Min. Value	
Default	
Max. Value	
Unit	mV
Access / EtherCAT-State	Ro
PDO Mapping	Transmit
Revision	All

1.14.2 6001:02 Actual mains voltage

Actual RMS-value of mains voltage

Description	Value
Index	0x6001 (Device)
Subindex	0x02
Datatype	UINT32
Min. Value	
Default	
Max. Value	
Unit	mV
Access / EtherCAT-State	Ro
PDO Mapping	Transmit
Revision	All

1.15 6002:x PSM Actual process values 2

Description	Value
Index	0x6002 (Device)
Subindex	0x00
Datatype	UINT8
Min. Value	
Default	2 (0x02)
Max. Value	
Unit	
Access / EtherCAT-State	Ro
PDO Mapping	
Revision	All

1.15.1 6002:01 Actual DC link current

Actual input current in the dc link.

Description	Value
Index	0x6002 (Device)
Subindex	0x01
Datatype	INT16
Min. Value	
Default	
Max. Value	
Unit	0,01 A
Access / EtherCAT-State	Ro
PDO Mapping	Transmit
Revision	All

1.15.2 6002:02 Actual motor load

Actual input load in the dc link in percent of nominal current.

Description	Value
Index	0x6002 (Device)
Subindex	0x02
Datatype	UINT16
Min. Value	
Default	
Max. Value	
Unit	%
Access / EtherCAT-State	Ro
PDO Mapping	Transmit
Revision	All

1.16 6003:x PSM Actual process values 3

Description	Value
Index	0x6003 (Device)
Subindex	0x00
Datatype	UINT8
Min. Value	
Default	2 (0x02)
Max. Value	
Unit	
Access / EtherCAT-State	Ro
PDO Mapping	
Revision	All

1.16.1 6003:01 Actual brake resistor continuous power

Actual continuous power converted in the brake resistor.

Description	Value
Index	0x6003 (Device)
Subindex	0x01
Datatype	UINT16
Min. Value	
Default	
Max. Value	
Unit	W
Access / EtherCAT-State	Ro
PDO Mapping	Transmit
Revision	All

1.16.2 6003:02 Actual brake resistor short-time energy

Actual brake energy generated in last second in % of maximal short-time energy (by on-time 1s)

Description	Value
Index	0x6003 (Device)
Subindex	0x02
Datatype	UINT16
Min. Value	
Default	
Max. Value	
Unit	%
Access / EtherCAT-State	Ro
PDO Mapping	Transmit
Revision	All

1.17 6004:x PSM Warning register

Description	Value
Index	0x6004 (Device)
Subindex	0x00
Datatype	UINT8
Min. Value	
Default	7 (0x07)
Max. Value	
Unit	
Access / EtherCAT-State	Ro
PDO Mapping	Transmit
Revision	All

1.17.1 6004:01 Warning__A0 Reserviert

Description	Value
Index	0x6004 (Device)
Subindex	0x01
Datatype	BOOL
Min. Value	
Default	
Max. Value	
Unit	
Access / EtherCAT-State	Ro
PDO Mapping	Transmit
Revision	All

1.17.2 6004:02 Warning__A1 Brake resistor power overload

Actual brake power or energy above brake resistor power warning threshold (8000:0D).

Description	Value
Index	0x6004 (Device)
Subindex	0x02
Datatype	BOOL
Min. Value	
Default	
Max. Value	
Unit	
Access / EtherCAT-State	Ro
PDO Mapping	Transmit
Revision	All

1.17.3 6004:03 Warning__A2 Device overtemperature

Actual heatsink temperature above heatsink temperature warning threshold (8000:0A).

Description	Value
Index	0x6004 (Device)
Subindex	0x03
Datatype	BOOL
Min. Value	
Default	
Max. Value	
Unit	
Access / EtherCAT-State	Ro
PDO Mapping	Transmit
Revision	All

1.17.4 6004:04 Warning__A3 DC link continuous overcurrent

DC link current above DC link continuous overcurrent warning threshold (8000:02).

Description	Value
Index	0x6004 (Device)
Subindex	0x04
Datatype	BOOL
Min. Value	
Default	
Max. Value	
Unit	
Access / EtherCAT-State	Ro
PDO Mapping	Transmit
Revision	All

1.17.5 6004:05 Warning__A4 Fan malfunction

Fan does not work.

Description	Value
Index	0x6004 (Device)
Subindex	0x05
Datatype	BOOL
Min. Value	
Default	
Max. Value	
Unit	
Access / EtherCAT-State	Ro
PDO Mapping	Transmit
Revision	All

1.17.6 6004:06 Warning__A5 Mains overvoltage

Actual mains voltage above mains voltage max tolerance (8000:07).

Description	Value
Index	0x6004 (Device)
Subindex	0x06
Datatype	BOOL
Min. Value	
Default	
Max. Value	
Unit	
Access / EtherCAT-State	Ro
PDO Mapping	Transmit
Revision	All

1.17.7 6004:07 Warning__A6 Mains undervoltage

Actual mains voltage below mains voltage min tolerance (8000:08).

Description	Value
Index	0x6004 (Device)
Subindex	0x07
Datatype	BOOL
Min. Value	
Default	
Max. Value	
Unit	
Access / EtherCAT-State	Ro
PDO Mapping	Transmit
Revision	All

1.18 6005:x PSM Diagnostics process data

Description	Value
Index	0x6005 (Device)
Subindex	0x00
Datatype	UINT8
Min. Value	
Default	3 (0x03)
Max. Value	
Unit	
Access / EtherCAT-State	Ro
PDO Mapping	
Revision	All

1.18.1 6005:01 DcLink state machine

Actual state of the DcLink state machine.

Description	Value
Index	0x6005 (Device)
Subindex	0x01
Datatype	ENUM (UINT8)
Min. Value	
Default	
Max. Value	
Unit	
Access / EtherCAT-State	Ro
PDO Mapping	Transmit
Revision	All

Enum Value	Description
9 (0x09)	Err_TorqueOff
8 (0x08)	Err_WaitingForDisablingAxis
7 (0x07)	RtO_ChargeInOperation
6 (0x06)	RtO_PowerLoss
5 (0x05)	RtO_ShortPowerLoss
4 (0x04)	RtO_Run
3 (0x03)	DcLinkOk
2 (0x02)	CheckDcLinkConnection
1 (0x01)	BypassChargeResistor
0 (0x00)	WaitingForCharging

1.18.2 6005:02 Umains state machine

Actual state of the Umains state machine.

Description	Value
Index	0x6005 (Device)
Subindex	0x02
Datatype	ENUM (UINT8)
Min. Value	
Default	
Max. Value	
Unit	
Access / EtherCAT-State	Ro
PDO Mapping	Transmit
Revision	All

Enum Value	Description
5 (0x05)	PowerSupplyTypeDetection
4 (0x04)	UmainsTooHigh
3 (0x03)	UmainsTooLow
2 (0x02)	UmainsLoss
1 (0x01)	UmainsOk
0 (0x00)	UmainsOff

1.18.3 6005:03 Error code

This object shall provide the error code of the last error, which occurred in this power supply module.

Description	Value
Index	0x6005 (Device)
Subindex	0x03
Datatype	UINT16
Min. Value	
Default	
Max. Value	
Unit	
Access / EtherCAT-State	Ro
PDO Mapping	Transmit
Revision	All

1.19 6006:x PSM Memory interface data

Description	Value
Index	0x6006 (Device)
Subindex	0x00
Datatype	UINT8
Min. Value	
Default	2 (0x02)
Max. Value	
Unit	
Access / EtherCAT-State	Ro
PDO Mapping	Transmit
Revision	All

1.19.1 6006:01 Data 1

Actual value of debug pointer 1.

Description	Value
Index	0x6006 (Device)
Subindex	0x01
Datatype	INT32
Min. Value	
Default	
Max. Value	
Unit	
Access / EtherCAT-State	Ro
PDO Mapping	Transmit
Revision	All

1.19.2 6006:02 Data 2

Actual value of debug pointer 2.

Description	Value
Index	0x6006 (Device)
Subindex	0x02
Datatype	INT32
Min. Value	
Default	
Max. Value	
Unit	
Access / EtherCAT-State	Ro
PDO Mapping	Transmit
Revision	All

1.20 6007:x PSM Statusword

Description	Value
Index	0x6007 (Device)
Subindex	0x00
Datatype	UINT8
Min. Value	
Default	8 (0x08)
Max. Value	
Unit	
Access / EtherCAT-State	Ro
PDO Mapping	Transmit
Revision	All

1.20.1 6007:01 Ready to operate

High if no errors, mains voltage between tolerances, dc link loaded and relays closed. It allows the axis to be enabled. If this gets low in operation, the axis do not be disabled but rather it avoids the axis to be enabled again.

Description	Value
Index	0x6007 (Device)
Subindex	0x01
Datatype	BOOL
Min. Value	
Default	
Max. Value	
Unit	
Access / EtherCAT-State	Ro
PDO Mapping	Transmit
Revision	All

1.20.2 6007:02 Error

High if any error is set. To know the error look at the Diag-History.

Description	Value
Index	0x6007 (Device)
Subindex	0x02
Datatype	BOOL
Min. Value	
Default	
Max. Value	
Unit	
Access / EtherCAT-State	Ro
PDO Mapping	Transmit
Revision	All

1.20.3 6007:03 Warning

High if any warning is set. To know the warning look at the warning register (6002).

Description	Value
Index	0x6007 (Device)
Subindex	0x03
Datatype	BOOL
Min. Value	
Default	
Max. Value	
Unit	
Access / EtherCAT-State	Ro
PDO Mapping	Transmit
Revision	All

1.20.4 6007:04 Relays closed

High if relays are closed.

Description	Value
Index	0x6007 (Device)
Subindex	0x04
Datatype	BOOL
Min. Value	
Default	
Max. Value	
Unit	
Access / EtherCAT-State	Ro
PDO Mapping	Transmit
Revision	All

1.20.5 6007:05 Brake chopper active

High if brake chopper is switched on.

Description	Value
Index	0x6007 (Device)
Subindex	0x05
Datatype	BOOL
Min. Value	
Default	
Max. Value	
Unit	
Access / EtherCAT-State	Ro
PDO Mapping	Transmit
Revision	All

1.20.6 6007:06 Fan active

High if fan is turning.

Description	Value
Index	0x6007 (Device)
Subindex	0x06
Datatype	BOOL
Min. Value	
Default	
Max. Value	
Unit	
Access / EtherCAT-State	Ro
PDO Mapping	Transmit
Revision	All

1.20.7 6007:07 Reserve 6

Description	Value
Index	0x6007 (Device)
Subindex	0x07
Datatype	BOOL
Min. Value	
Default	
Max. Value	
Unit	
Access / EtherCAT-State	Ro
PDO Mapping	Transmit
Revision	All

1.20.8 6007:08 Reserve 7

Description	Value
Index	0x6007 (Device)
Subindex	0x08
Datatype	BOOL
Min. Value	
Default	
Max. Value	
Unit	
Access / EtherCAT-State	Ro
PDO Mapping	Transmit
Revision	All

1.21 8000:x PSM Parameters

Description	Value
Index	0x8000 (Device)
Subindex	0x00
Datatype	UINT8
Min. Value	
Default	17 (0x11)
Max. Value	
Unit	
Access / EtherCAT-State	Rw
PDO Mapping	
Revision	All

1.21.1 8000:01 DC link max voltage

Threshold for dc link overvoltage error. The brake resistor switchOn threshold voltage 9006:12 (calculated from this parameter) must be greater than mains overvoltage threshold $\times\sqrt{2}$.

Description	Value
Index	0x8000 (Device)
Subindex	0x01
Datatype	UINT16
Min. Value	0
Default	8750 (0x222E)
Max. Value	8750 (0x222E)
Unit	0,1 V
Access / EtherCAT-State	Rw / PreOp
PDO Mapping	
Revision	All

1.21.2 8000:02 DC link continuous overcurrent warning threshold

By actual motoric load (6001:04) above this value (percent of nominal dc link current) the DC link continuous overcurrent warning (6004:04) is set.

Description	Value
Index	0x8000 (Device)
Subindex	0x02
Datatype	UINT16
Min. Value	0
Default	90 (0x005A)
Max. Value	101 (0x0065)
Unit	%
Access / EtherCAT-State	Rw / PreOp
PDO Mapping	
Revision	All

1.21.3 8000:04 Mains type

According to this value following mains supply modes can be set: AC 3 phases (0), AC 1 phase (1) oder DC (2),

Description	Value
Index	0x8000 (Device)
Subindex	0x04
Datatype	ENUM (UINT8)
Min. Value	
Default	AC 3 phases (0)
Max. Value	
Unit	
Access / EtherCAT-State	Rw / PreOp
PDO Mapping	
Revision	All

Enum Value	Description
2 (0x02)	DC
1 (0x01)	AC 1 phase
0 (0x00)	AC 3 phases

1.21.4 8000:06 Mains voltage

Connected mains RMS-voltage.

Description	Value
Index	0x8000 (Device)
Subindex	0x06
Datatype	UINT16
Min. Value	180 (0x00B4)
Default	4000 (0x0FA0)
Max. Value	7000 (0x1B58)
Unit	0,1 V
Access / EtherCAT-State	Rw / PreOp
PDO Mapping	
Revision	All

1.21.5 8000:07 Mains voltage max tolerance

Positive tolerance of parametrized mains voltage (8000:06), above that the mains overvoltage warning is set. For values >20% this threshold is also assumed to set the mains overvoltage error.

Description	Value
Index	0x8000 (Device)
Subindex	0x07
Datatype	UINT16
Min. Value	0
Default	10 (0x000A)
Max. Value	50 (0x0032)
Unit	%
Access / EtherCAT-State	Rw / PreOp
PDO Mapping	
Revision	All

1.21.6 8000:08 Mains voltage min tolerance

Negative tolerance of parametrized mains voltage (8000:06), below that the mains undervoltage warning is set. For values >30% this threshold is also assumed to set the mains undervoltage error.

Description	Value
Index	0x8000 (Device)
Subindex	0x08
Datatype	UINT16
Min. Value	0
Default	25 (0x0019)
Max. Value	50 (0x0032)
Unit	%
Access / EtherCAT-State	Rw / PreOp
PDO Mapping	
Revision	All

1.21.7 8000:0A Device temperature warning threshold

Percent of heatsink max temperature, above which the device overtemperature warning (6004:03) is set.

Description	Value
Index	0x8000 (Device)
Subindex	0x0A
Datatype	UINT16
Min. Value	0
Default	90 (0x005A)
Max. Value	101 (0x0065)
Unit	%
Access / EtherCAT-State	Rw / PreOp
PDO Mapping	
Revision	All

1.21.8 8000:0B External brake resistor value

Resistance value of brake resistor. The default value is the resistance of the internal brake resistor.

Description	Value
Index	0x8000 (Device)
Subindex	0x0B
Datatype	UINT16
Min. Value	80 (0x0050)
Default	330 (0x014A)
Max. Value	500 (0x01F4)
Unit	0,1 W
Access / EtherCAT-State	Rw / PreOp
PDO Mapping	
Revision	All

1.21.9 8000:0C External brake resistor continuous power

Threshold of brake continuous power for external brake resistor, above which the brake resistor is disabled.

Description	Value
Index	0x8000 (Device)
Subindex	0x0C
Datatype	UINT16
Min. Value	0
Default	100 (0x0064)
Max. Value	3200 (0x0C80)
Unit	W
Access / EtherCAT-State	Rw / PreOp
PDO Mapping	
Revision	All

1.21.10 8000:0D Brake resistor power warning threshold

Percent of brake resistor max power (8000:0c) and percent of brake resistor max short time energy (1 second on-time), above which the brake resistor power overload warning is set.

Description	Value
Index	0x8000 (Device)
Subindex	0x0D
Datatype	UINT16
Min. Value	0
Default	90 (0x005A)
Max. Value	101 (0x0065)
Unit	%
Access / EtherCAT-State	Rw / PreOp
PDO Mapping	
Revision	All

1.21.11 8000:0E Brake resistor connection mode

According to this value following modes can be set: Internal(0) or external brake resistor(1),

Description	Value
Index	0x8000 (Device)
Subindex	0x0E
Datatype	ENUM (UINT4)
Min. Value	
Default	Internal brake resistor (0)
Max. Value	
Unit	
Access / EtherCAT-State	Rw / PreOp
PDO Mapping	
Revision	All

Enum Value	Description
1 (0x01)	External brake resistor
0 (0x00)	Internal brake resistor

1.21.12 8000:10 Ext brake resistor overload factor at 1% duty cycle

Overload factor of external brake resistor when switched on for 1% of duty cycle.

Description	Value
Index	0x8000 (Device)
Subindex	0x10
Datatype	UINT8
Min. Value	1 (0x01)
Default	18 (0x12)
Max. Value	255 (0xFF)
Unit	
Access / EtherCAT-State	Rw / PreOp
PDO Mapping	
Revision	All

1.21.13 8000:11 Control word

⚠ WARNING

Set State Machine to Pre-Op Mode

The CoE object 8000:11 Control word only works in pre-op mode. If the AX8000 multi-axis servo system is in Init mode, the DC link is not discharged automatically.

There is still a life-threatening voltage of > 875 V_{DC} on the capacitors after disconnection from the supply network. Serious or even fatal injuries may result if this is ignored.

Avoid contact with DC link DC+ and DC-

Measure the voltage on the DC link test contacts DC+ und DC-. Keep to the waiting times after disconnection from the supply network:

- AX8620 and AX8640; 30 minutes
- AX8108, AX8118 and AX8206; 30 minutes

⇒ *There is still a life-threatening voltage of > 875 V_{DC} on the capacitors after disconnection from the supply network. Serious or even fatal injuries may result if this is ignored.*

For multiple selection add the integer value of each selection and write the result.

Description	Value
Index	0x8000 (Device)
Subindex	0x11
Datatype	ENUM (UINT16)
Min. Value	
Default	For multiple selection, set integer value (0)
Max. Value	
Unit	
Access / EtherCAT-State	Rw / PreOp
PDO Mapping	
Revision	All

Enum Value	Description
16 (0x10)	Deactivate brake resistor check
8 (0x08)	Long filter time for Umains phase error detection
4 (0x04)	Deactivate Umains phase error detection
2 (0x02)	Multiple power supply modules
1 (0x01)	Fast discharge dc link
0 (0x00)	For multiple selection, set integer value

1.22 8001:x PSM Memory interface config

Description	Value
Index	0x8001 (Device)
Subindex	0x00
Datatype	UINT8
Min. Value	
Default	7 (0x07)
Max. Value	
Unit	
Access / EtherCAT-State	Rw
PDO Mapping	
Revision	All

1.22.1 8001:01 Address 1

Memory address of internal variable for debug pointer 1.

Description	Value
Index	0x8001 (Device)
Subindex	0x01
Datatype	UINT16
Min. Value	
Default	0
Max. Value	
Unit	
Access / EtherCAT-State	Rw
PDO Mapping	
Revision	All

1.22.2 8001:02 Address 2

Memory address of internal variable for debug pointer 2.

Description	Value
Index	0x8001 (Device)
Subindex	0x02
Datatype	UINT16
Min. Value	
Default	0
Max. Value	
Unit	
Access / EtherCAT-State	Rw
PDO Mapping	
Revision	All

1.22.3 8001:05 Byte lenght 1

Lenght in bytes of internal variable to be debugged by debug pointer 1.

Description	Value
Index	0x8001 (Device)
Subindex	0x05
Datatype	ENUM (UINT8)
Min. Value	
Default	2 byte (2)
Max. Value	
Unit	
Access / EtherCAT-State	Rw
PDO Mapping	
Revision	All

Enum Value	Description
4 (0x04)	4 bytes
2 (0x02)	2 byte
1 (0x01)	1 bytes

1.22.4 8001:06 Byte lenght 2

Lenght in bytes of internal variable to be debugged by debug pointer 2.

Description	Value
Index	0x8001 (Device)
Subindex	0x06
Datatype	ENUM (UINT8)
Min. Value	
Default	2 bytes (2)
Max. Value	
Unit	
Access / EtherCAT-State	Rw
PDO Mapping	
Revision	All

Enum Value	Description
4 (0x04)	4 bytes
2 (0x02)	2 bytes
1 (0x01)	1 bytes

1.22.5 8001:07 Debug parameter

Memory address of internal variable for debug pointer 1.

Description	Value
Index	0x8001 (Device)
Subindex	0x07
Datatype	UINT16
Min. Value	
Default	0
Max. Value	
Unit	
Access / EtherCAT-State	Rw
PDO Mapping	
Revision	All

1.23 8002:x PSM Memory control

Description	Value
Index	0x8002 (Device)
Subindex	0x00
Datatype	UINT8
Min. Value	
Default	18 (0x12)
Max. Value	
Unit	
Access / EtherCAT-State	Rw
PDO Mapping	
Revision	All

1.23.1 8002:01 Read error memory

By rising edge and slave in PREOP the error memory is read and shown at the diag-history.

Description	Value
Index	0x8002 (Device)
Subindex	0x01
Datatype	BOOL
Min. Value	
Default	FALSE
Max. Value	
Unit	
Access / EtherCAT-State	Rw / PreOp
PDO Mapping	
Revision	All

1.23.2 8002:02 Reset error memory

By rising edge, slave in PREOP and right password the error memory is reseted. Internal use only.

Description	Value
Index	0x8002 (Device)
Subindex	0x02
Datatype	BOOL
Min. Value	
Default	FALSE
Max. Value	
Unit	
Access / EtherCAT-State	Rw / PreOp
PDO Mapping	
Revision	All

1.23.3 8002:03 Write ids

By rising edge, slave in PREOP and right password the pcb (9003, 9004, 9005, 9007) and device ids (9002) are written in the EEPROM. Internal use only.

Description	Value
Index	0x8002 (Device)
Subindex	0x03
Datatype	BOOL
Min. Value	
Default	FALSE
Max. Value	
Unit	
Access / EtherCAT-State	Rw / PreOp
PDO Mapping	
Revision	All

1.23.4 8002:04 Write factory settings

By rising edge, slave in PREOP and right password the factory settings (2000) are written in the EEPROM. Internal use only.

Description	Value
Index	0x8002 (Device)
Subindex	0x04
Datatype	BOOL
Min. Value	
Default	FALSE
Max. Value	
Unit	
Access / EtherCAT-State	Rw / PreOp
PDO Mapping	
Revision	All

1.23.5 8002:05 Reset operating time

By rising edge, slave in PREOP and right password the operating time (A000:01) is reseted. Internal use only.

Description	Value
Index	0x8002 (Device)
Subindex	0x05
Datatype	BOOL
Min. Value	
Default	FALSE
Max. Value	
Unit	
Access / EtherCAT-State	Rw / PreOp
PDO Mapping	
Revision	All

1.23.6 8002:11 Data

Value of Data type (8002:12) to be written in EEPROM

Description	Value
Index	0x8002 (Device)
Subindex	0x11
Datatype	VISIBLE_STRING
Min. Value	
Default	0
Max. Value	
Unit	
Access / EtherCAT-State	Rw / PreOp
PDO Mapping	
Revision	All

1.23.7 8002:12 Data type

Data type to be written in EEPROM

Description	Value
Index	0x8002 (Device)
Subindex	0x12
Datatype	ENUM (UINT16)
Min. Value	
Default	Select (0)
Max. Value	
Unit	
Access / EtherCAT-State	Rw / PreOp
PDO Mapping	
Revision	All

Enum Value	Description
3 (0x03)	Production date (dd.mm.yyyy)
2 (0x02)	HW revision
1 (0x01)	Model no.
0 (0x00)	Select

1.24 8003 PSM Reset errors

Description	Value
Index	0x8003 (Device)
Subindex	0x00
Datatype	UINT8
Min. Value	
Default	0
Max. Value	
Unit	
Access / EtherCAT-State	Rw
PDO Mapping	
Revision	All

1.25 8004:x PSM Parameters error manager

Password to write this object: 0x24A8C671. Type it in Code word f008.

Description	Value
Index	0x8004 (Device)
Subindex	0x00
Datatype	UINT8
Min. Value	
Default	2 (0x02)
Max. Value	
Unit	
Access / EtherCAT-State	Rw
PDO Mapping	
Revision	All

1.25.1 8004:01 Choose force reaction

This object shall indicate the forced error reaction.

Description	Value
Index	0x8004 (Device)
Subindex	0x01
Datatype	ENUM (INT16)
Min. Value	
Default	TorqueOffOrder (0)
Max. Value	
Unit	
Access / EtherCAT-State	Rw
PDO Mapping	
Revision	All

Enum Value	Description
0 (0x0000)	TorqueOffOrder
-1 (0xFFFF)	NCHandlingOrder
-2 (0xFFFE)	NonGenerativeBrakeOrder
-3 (0xFFFD)	GenerativeBrakeOrder
-4 (0xFFFC)	BrakeChopperOff

1.25.2 8004:02 Force reaction

This object is to perform the forced error reaction.

Description	Value
Index	0x8004 (Device)
Subindex	0x02
Datatype	BOOL
Min. Value	
Default	FALSE
Max. Value	
Unit	
Access / EtherCAT-State	Rw
PDO Mapping	
Revision	All

1.26 8005:x PSM Factory settings

Description	Value
Index	0x8005 (Device)
Subindex	0x00
Datatype	UINT8
Min. Value	
Default	18 (0x12)
Max. Value	
Unit	
Access / EtherCAT-State	Rw
PDO Mapping	
Revision	All

1.26.1 8005:01 DC link current scaling gain

Description	Value
Index	0x8005 (Device)
Subindex	0x01
Datatype	INT16
Min. Value	0
Default	1000 (0x03E8)
Max. Value	32767 (0x7FFF)
Unit	m
Access / EtherCAT-State	Rw
PDO Mapping	
Revision	All

1.26.2 8005:02 DC link current offset

Description	Value
Index	0x8005 (Device)
Subindex	0x02
Datatype	INT16
Min. Value	-32768 (0x8000)
Default	0
Max. Value	32767 (0x7FFF)
Unit	0,01 A
Access / EtherCAT-State	Rw
PDO Mapping	
Revision	All

1.26.3 8005:03 DC link voltage scaling gain

Description	Value
Index	0x8005 (Device)
Subindex	0x03
Datatype	INT16
Min. Value	0
Default	1000 (0x03E8)
Max. Value	32767 (0x7FFF)
Unit	m
Access / EtherCAT-State	Rw
PDO Mapping	
Revision	All

1.26.4 8005:04 DC link voltage offset

Description	Value
Index	0x8005 (Device)
Subindex	0x04
Datatype	INT16
Min. Value	-32768 (0x8000)
Default	0
Max. Value	32767 (0x7FFF)
Unit	0,1 V
Access / EtherCAT-State	Rw
PDO Mapping	
Revision	All

1.26.5 8005:05 Mains voltage scaling gain 1

Description	Value
Index	0x8005 (Device)
Subindex	0x05
Datatype	INT16
Min. Value	0
Default	1000 (0x03E8)
Max. Value	32767 (0x7FFF)
Unit	m
Access / EtherCAT-State	Rw
PDO Mapping	
Revision	All

1.26.6 8005:06 Mains voltage offset1

Description	Value
Index	0x8005 (Device)
Subindex	0x06
Datatype	INT16
Min. Value	-32768 (0x8000)
Default	0
Max. Value	32767 (0x7FFF)
Unit	0,1 V
Access / EtherCAT-State	Rw
PDO Mapping	
Revision	All

1.26.7 8005:07 Mains voltage scaling gain 2

Description	Value
Index	0x8005 (Device)
Subindex	0x07
Datatype	INT16
Min. Value	0
Default	1000 (0x03E8)
Max. Value	32767 (0x7FFF)
Unit	m
Access / EtherCAT-State	Rw
PDO Mapping	
Revision	All

1.26.8 8005:08 Mains voltage offset 2

Description	Value
Index	0x8005 (Device)
Subindex	0x08
Datatype	INT16
Min. Value	
Default	0
Max. Value	
Unit	0,1 V
Access / EtherCAT-State	Rw
PDO Mapping	
Revision	All

1.26.9 8005:09 Mains voltage scaling gain 3

Description	Value
Index	0x8005 (Device)
Subindex	0x09
Datatype	INT16
Min. Value	0
Default	1000 (0x03E8)
Max. Value	32767 (0x7FFF)
Unit	m
Access / EtherCAT-State	Rw
PDO Mapping	
Revision	All

1.26.10 8005:0A Mains voltage offset 3

Description	Value
Index	0x8005 (Device)
Subindex	0x0A
Datatype	INT16
Min. Value	-32768 (0x8000)
Default	0
Max. Value	32767 (0x7FFF)
Unit	0,1 V
Access / EtherCAT-State	Rw
PDO Mapping	
Revision	All

1.26.11 8005:10 Checksum

Description	Value
Index	0x8005 (Device)
Subindex	0x10
Datatype	UINT16
Min. Value	
Default	0
Max. Value	
Unit	
Access / EtherCAT-State	Rw
PDO Mapping	
Revision	All

1.26.12 8005:11 Control word

Description	Value
Index	0x8005 (Device)
Subindex	0x11
Datatype	UINT16
Min. Value	
Default	0
Max. Value	
Unit	
Access / EtherCAT-State	Rw
PDO Mapping	
Revision	All

1.26.13 8005:12 Rated brake resistor power

Description	Value
Index	0x8005 (Device)
Subindex	0x12
Datatype	UINT16
Min. Value	
Default	0
Max. Value	
Unit	W
Access / EtherCAT-State	Rw
PDO Mapping	
Revision	All

1.27 9002:x PSM Device ids

Description	Value
Index	0x9002 (Device)
Subindex	0x00
Datatype	UINT8
Min. Value	
Default	15 (0x0F)
Max. Value	
Unit	
Access / EtherCAT-State	Ro
PDO Mapping	
Revision	All

1.27.1 9002:01 Vendor id

Description	Value
Index	0x9002 (Device)
Subindex	0x01
Datatype	UINT32
Min. Value	
Default	0
Max. Value	
Unit	
Access / EtherCAT-State	Rw
PDO Mapping	
Revision	All

1.27.2 9002:02 Product code

Description	Value
Index	0x9002 (Device)
Subindex	0x02
Datatype	UINT32
Min. Value	
Default	0
Max. Value	
Unit	
Access / EtherCAT-State	Rw
PDO Mapping	
Revision	All

1.27.3 9002:03 Revision no

Description	Value
Index	0x9002 (Device)
Subindex	0x03
Datatype	UINT32
Min. Value	
Default	0
Max. Value	
Unit	
Access / EtherCAT-State	Rw
PDO Mapping	
Revision	All

1.27.4 9002:04 Serial no

Description	Value
Index	0x9002 (Device)
Subindex	0x04
Datatype	UINT32
Min. Value	
Default	0
Max. Value	
Unit	
Access / EtherCAT-State	Rw
PDO Mapping	
Revision	All

1.27.5 9002:05 Manufacturing date

Description	Value
Index	0x9002 (Device)
Subindex	0x05
Datatype	UINT16
Min. Value	
Default	0
Max. Value	
Unit	
Access / EtherCAT-State	Rw
PDO Mapping	
Revision	All

1.27.6 9002:06 HW id 1

Description	Value
Index	0x9002 (Device)
Subindex	0x06
Datatype	UINT16
Min. Value	
Default	0
Max. Value	
Unit	
Access / EtherCAT-State	Rw
PDO Mapping	
Revision	All

1.27.7 9002:0A HW id 2

Description	Value
Index	0x9002 (Device)
Subindex	0x0A
Datatype	UINT16
Min. Value	
Default	0
Max. Value	
Unit	
Access / EtherCAT-State	Rw
PDO Mapping	
Revision	All

1.27.8 9002:0B HW id 3

Description	Value
Index	0x9002 (Device)
Subindex	0x0B
Datatype	UINT16
Min. Value	
Default	0
Max. Value	
Unit	
Access / EtherCAT-State	Rw
PDO Mapping	
Revision	All

1.27.9 9002:0C HW id 4

Description	Value
Index	0x9002 (Device)
Subindex	0x0C
Datatype	UINT16
Min. Value	
Default	0
Max. Value	
Unit	
Access / EtherCAT-State	Rw
PDO Mapping	
Revision	All

1.27.10 9002:0D Free switch code 1

Description	Value
Index	0x9002 (Device)
Subindex	0x0D
Datatype	UINT8
Min. Value	
Default	0
Max. Value	
Unit	
Access / EtherCAT-State	Rw
PDO Mapping	
Revision	All

1.27.11 9002:0E Free switch code 2

Description	Value
Index	0x9002 (Device)
Subindex	0x0E
Datatype	UINT8
Min. Value	
Default	0
Max. Value	
Unit	
Access / EtherCAT-State	Rw
PDO Mapping	
Revision	All

1.27.12 9002:0F Checksum

Description	Value
Index	0x9002 (Device)
Subindex	0x0F
Datatype	UINT16
Min. Value	
Default	0
Max. Value	
Unit	
Access / EtherCAT-State	Rw
PDO Mapping	
Revision	All

1.28 9003:x PSM Pcb ids Pcb id 0

Description	Value
Index	0x9003 (Device)
Subindex	0x00
Datatype	UINT8
Min. Value	
Default	26 (0x1A)
Max. Value	
Unit	
Access / EtherCAT-State	Ro
PDO Mapping	
Revision	All

1.28.1 9003:01 Structure version

Description	Value
Index	0x9003 (Device)
Subindex	0x01
Datatype	UINT16
Min. Value	
Default	0
Max. Value	
Unit	
Access / EtherCAT-State	Rw
PDO Mapping	
Revision	All

1.28.2 9003:02 Manufacturing date

Description	Value
Index	0x9003 (Device)
Subindex	0x02
Datatype	UINT16
Min. Value	
Default	0
Max. Value	
Unit	
Access / EtherCAT-State	Rw
PDO Mapping	
Revision	All

1.28.3 9003:03 Hwld reserve

Description	Value
Index	0x9003 (Device)
Subindex	0x03
Datatype	UINT8
Min. Value	
Default	0
Max. Value	
Unit	
Access / EtherCAT-State	Rw
PDO Mapping	
Revision	All

1.28.4 9003:04 Hwld Hardware type

Description	Value
Index	0x9003 (Device)
Subindex	0x04
Datatype	UINT8
Min. Value	
Default	0
Max. Value	
Unit	
Access / EtherCAT-State	Rw
PDO Mapping	
Revision	All

1.28.5 9003:05 Hwld Feature flags

Description	Value
Index	0x9003 (Device)
Subindex	0x05
Datatype	UINT8
Min. Value	
Default	0
Max. Value	
Unit	
Access / EtherCAT-State	Rw
PDO Mapping	
Revision	All

1.28.6 9003:06 Hwld Supplier

Description	Value
Index	0x9003 (Device)
Subindex	0x06
Datatype	UINT8
Min. Value	
Default	0
Max. Value	
Unit	
Access / EtherCAT-State	Rw
PDO Mapping	
Revision	All

1.28.7 9003:07 Hwld Component type

Description	Value
Index	0x9003 (Device)
Subindex	0x07
Datatype	UINT8
Min. Value	
Default	0
Max. Value	
Unit	
Access / EtherCAT-State	Rw
PDO Mapping	
Revision	All

1.28.8 9003:08 Hwld reserve 2

Description	Value
Index	0x9003 (Device)
Subindex	0x08
Datatype	UINT8
Min. Value	
Default	0
Max. Value	
Unit	
Access / EtherCAT-State	Rw
PDO Mapping	
Revision	All

1.28.9 9003:09 Hwld Hardware index

Description	Value
Index	0x9003 (Device)
Subindex	0x09
Datatype	UINT8
Min. Value	
Default	0
Max. Value	
Unit	
Access / EtherCAT-State	Rw
PDO Mapping	
Revision	All

1.28.10 9003:0A Hwld Pcb revision

Description	Value
Index	0x9003 (Device)
Subindex	0x0A
Datatype	UINT8
Min. Value	
Default	0
Max. Value	
Unit	
Access / EtherCAT-State	Rw
PDO Mapping	
Revision	All

1.28.11 9003:0B Hwld Pcb type

Description	Value
Index	0x9003 (Device)
Subindex	0x0B
Datatype	UINT8
Min. Value	
Default	0
Max. Value	
Unit	
Access / EtherCAT-State	Rw
PDO Mapping	
Revision	All

1.28.12 9003:0C Hwld Supported no of channels

Description	Value
Index	0x9003 (Device)
Subindex	0x0C
Datatype	UINT8
Min. Value	
Default	0
Max. Value	
Unit	
Access / EtherCAT-State	Rw
PDO Mapping	
Revision	All

1.28.13 9003:0D Hwld Firmware index

Description	Value
Index	0x9003 (Device)
Subindex	0x0D
Datatype	UINT8
Min. Value	
Default	0
Max. Value	
Unit	
Access / EtherCAT-State	Rw
PDO Mapping	
Revision	All

1.28.14 9003:0F DMC 1

Description	Value
Index	0x9003 (Device)
Subindex	0x0F
Datatype	UINT8
Min. Value	
Default	48 (0x30)
Max. Value	
Unit	
Access / EtherCAT-State	Rw
PDO Mapping	
Revision	All

1.28.15 9003:10 DMC 2

Description	Value
Index	0x9003 (Device)
Subindex	0x10
Datatype	UINT8
Min. Value	
Default	0
Max. Value	
Unit	
Access / EtherCAT-State	Rw
PDO Mapping	
Revision	All

1.28.16 9003:11 DMC 3

Description	Value
Index	0x9003 (Device)
Subindex	0x11
Datatype	UINT8
Min. Value	
Default	0
Max. Value	
Unit	
Access / EtherCAT-State	Rw
PDO Mapping	
Revision	All

1.28.17 9003:12 DMC 4

Description	Value
Index	0x9003 (Device)
Subindex	0x12
Datatype	UINT8
Min. Value	
Default	0
Max. Value	
Unit	
Access / EtherCAT-State	Rw
PDO Mapping	
Revision	All

1.28.18 9003:13 DMC 5

Description	Value
Index	0x9003 (Device)
Subindex	0x13
Datatype	UINT8
Min. Value	
Default	0
Max. Value	
Unit	
Access / EtherCAT-State	Rw
PDO Mapping	
Revision	All

1.28.19 9003:14 DMC 6

Description	Value
Index	0x9003 (Device)
Subindex	0x14
Datatype	UINT8
Min. Value	
Default	0
Max. Value	
Unit	
Access / EtherCAT-State	Rw
PDO Mapping	
Revision	All

1.28.20 9003:15 DMC 7

Description	Value
Index	0x9003 (Device)
Subindex	0x15
Datatype	UINT8
Min. Value	
Default	0
Max. Value	
Unit	
Access / EtherCAT-State	Rw
PDO Mapping	
Revision	All

1.28.21 9003:16 DMC 8

Description	Value
Index	0x9003 (Device)
Subindex	0x16
Datatype	UINT8
Min. Value	
Default	0
Max. Value	
Unit	
Access / EtherCAT-State	Rw
PDO Mapping	
Revision	All

1.28.22 9003:17 DMC 9

Description	Value
Index	0x9003 (Device)
Subindex	0x17
Datatype	UINT8
Min. Value	
Default	0
Max. Value	
Unit	
Access / EtherCAT-State	Rw
PDO Mapping	
Revision	All

1.28.23 9003:18 DMC 10

Description	Value
Index	0x9003 (Device)
Subindex	0x18
Datatype	UINT8
Min. Value	
Default	0
Max. Value	
Unit	
Access / EtherCAT-State	Rw
PDO Mapping	
Revision	All

1.28.24 9003:1A Checksum

Description	Value
Index	0x9003 (Device)
Subindex	0x1A
Datatype	UINT16
Min. Value	
Default	0
Max. Value	
Unit	
Access / EtherCAT-State	Rw
PDO Mapping	
Revision	All

1.29 9004:x PSM Pcb ids Pcb id 1

Description	Value
Index	0x9004 (Device)
Subindex	0x00
Datatype	UINT8
Min. Value	
Default	26 (0x1A)
Max. Value	
Unit	
Access / EtherCAT-State	Ro
PDO Mapping	
Revision	All

1.29.1 9004:01 Structure version

Description	Value
Index	0x9004 (Device)
Subindex	0x01
Datatype	UINT16
Min. Value	
Default	0
Max. Value	
Unit	
Access / EtherCAT-State	Rw
PDO Mapping	
Revision	All

1.29.2 9004:02 Manufacturing date

Description	Value
Index	0x9004 (Device)
Subindex	0x02
Datatype	UINT16
Min. Value	
Default	0
Max. Value	
Unit	
Access / EtherCAT-State	Rw
PDO Mapping	
Revision	All

1.29.3 9004:03 Hwld reserve

Description	Value
Index	0x9004 (Device)
Subindex	0x03
Datatype	UINT8
Min. Value	
Default	0
Max. Value	
Unit	
Access / EtherCAT-State	Rw
PDO Mapping	
Revision	All

1.29.4 9004:04 Hwld Hardware type

Description	Value
Index	0x9004 (Device)
Subindex	0x04
Datatype	UINT8
Min. Value	
Default	0
Max. Value	
Unit	
Access / EtherCAT-State	Rw
PDO Mapping	
Revision	All

1.29.5 9004:05 Hwld Feature flags

Description	Value
Index	0x9004 (Device)
Subindex	0x05
Datatype	UINT8
Min. Value	
Default	0
Max. Value	
Unit	
Access / EtherCAT-State	Rw
PDO Mapping	
Revision	All

1.29.6 9004:06 Hwld Supplier

Description	Value
Index	0x9004 (Device)
Subindex	0x06
Datatype	UINT8
Min. Value	
Default	0
Max. Value	
Unit	
Access / EtherCAT-State	Rw
PDO Mapping	
Revision	All

1.29.7 9004:07 Hwld Component type

Description	Value
Index	0x9004 (Device)
Subindex	0x07
Datatype	UINT8
Min. Value	
Default	0
Max. Value	
Unit	
Access / EtherCAT-State	Rw
PDO Mapping	
Revision	All

1.29.8 9004:08 Hwld reserve 2

Description	Value
Index	0x9004 (Device)
Subindex	0x08
Datatype	UINT8
Min. Value	
Default	0
Max. Value	
Unit	
Access / EtherCAT-State	Rw
PDO Mapping	
Revision	All

1.29.9 9004:09 Hwld Hardware index

Description	Value
Index	0x9004 (Device)
Subindex	0x09
Datatype	UINT8
Min. Value	
Default	0
Max. Value	
Unit	
Access / EtherCAT-State	Rw
PDO Mapping	
Revision	All

1.29.10 9004:0A Hwld Pcb revision

Description	Value
Index	0x9004 (Device)
Subindex	0x0A
Datatype	UINT8
Min. Value	
Default	0
Max. Value	
Unit	
Access / EtherCAT-State	Rw
PDO Mapping	
Revision	All

1.29.11 9004:0B Hwld Pcb type

Description	Value
Index	0x9004 (Device)
Subindex	0x0B
Datatype	UINT8
Min. Value	
Default	0
Max. Value	
Unit	
Access / EtherCAT-State	Rw
PDO Mapping	
Revision	All

1.29.12 9004:0C Hwld Supported no of channels

Description	Value
Index	0x9004 (Device)
Subindex	0x0C
Datatype	UINT8
Min. Value	
Default	0
Max. Value	
Unit	
Access / EtherCAT-State	Rw
PDO Mapping	
Revision	All

1.29.13 9004:0D Hwld Firmware index

Description	Value
Index	0x9004 (Device)
Subindex	0x0D
Datatype	UINT8
Min. Value	
Default	0
Max. Value	
Unit	
Access / EtherCAT-State	Rw
PDO Mapping	
Revision	All

1.29.14 9004:0F DMC 1

Description	Value
Index	0x9004 (Device)
Subindex	0x0F
Datatype	UINT8
Min. Value	
Default	48 (0x30)
Max. Value	
Unit	
Access / EtherCAT-State	Rw
PDO Mapping	
Revision	All

1.29.15 9004:10 DMC 2

Description	Value
Index	0x9004 (Device)
Subindex	0x10
Datatype	UINT8
Min. Value	
Default	0
Max. Value	
Unit	
Access / EtherCAT-State	Rw
PDO Mapping	
Revision	All

1.29.16 9004:11 DMC 3

Description	Value
Index	0x9004 (Device)
Subindex	0x11
Datatype	UINT8
Min. Value	
Default	0
Max. Value	
Unit	
Access / EtherCAT-State	Rw
PDO Mapping	
Revision	All

1.29.17 9004:12 DMC 4

Description	Value
Index	0x9004 (Device)
Subindex	0x12
Datatype	UINT8
Min. Value	
Default	0
Max. Value	
Unit	
Access / EtherCAT-State	Rw
PDO Mapping	
Revision	All

1.29.18 9004:13 DMC 5

Description	Value
Index	0x9004 (Device)
Subindex	0x13
Datatype	UINT8
Min. Value	
Default	0
Max. Value	
Unit	
Access / EtherCAT-State	Rw
PDO Mapping	
Revision	All

1.29.19 9004:14 DMC 6

Description	Value
Index	0x9004 (Device)
Subindex	0x14
Datatype	UINT8
Min. Value	
Default	0
Max. Value	
Unit	
Access / EtherCAT-State	Rw
PDO Mapping	
Revision	All

1.29.20 9004:15 DMC 7

Description	Value
Index	0x9004 (Device)
Subindex	0x15
Datatype	UINT8
Min. Value	
Default	0
Max. Value	
Unit	
Access / EtherCAT-State	Rw
PDO Mapping	
Revision	All

1.29.21 9004:16 DMC 8

Description	Value
Index	0x9004 (Device)
Subindex	0x16
Datatype	UINT8
Min. Value	
Default	0
Max. Value	
Unit	
Access / EtherCAT-State	Rw
PDO Mapping	
Revision	All

1.29.22 9004:17 DMC 9

Description	Value
Index	0x9004 (Device)
Subindex	0x17
Datatype	UINT8
Min. Value	
Default	0
Max. Value	
Unit	
Access / EtherCAT-State	Rw
PDO Mapping	
Revision	All

1.29.23 9004:18 DMC 10

Description	Value
Index	0x9004 (Device)
Subindex	0x18
Datatype	UINT8
Min. Value	
Default	0
Max. Value	
Unit	
Access / EtherCAT-State	Rw
PDO Mapping	
Revision	All

1.29.24 9004:1A Checksum

Description	Value
Index	0x9004 (Device)
Subindex	0x1A
Datatype	UINT16
Min. Value	
Default	0
Max. Value	
Unit	
Access / EtherCAT-State	Rw
PDO Mapping	
Revision	All

1.30 9005:x PSM Pcb ids Pcb id 2

Description	Value
Index	0x9005 (Device)
Subindex	0x00
Datatype	UINT8
Min. Value	
Default	26 (0x1A)
Max. Value	
Unit	
Access / EtherCAT-State	Ro
PDO Mapping	
Revision	All

1.30.1 9005:01 Structure version

Description	Value
Index	0x9005 (Device)
Subindex	0x01
Datatype	UINT16
Min. Value	
Default	0
Max. Value	
Unit	
Access / EtherCAT-State	Rw
PDO Mapping	
Revision	All

1.30.2 9005:02 Manufacturing date

Description	Value
Index	0x9005 (Device)
Subindex	0x02
Datatype	UINT16
Min. Value	
Default	0
Max. Value	
Unit	
Access / EtherCAT-State	Rw
PDO Mapping	
Revision	All

1.30.3 9005:03 Hwld reserve

Description	Value
Index	0x9005 (Device)
Subindex	0x03
Datatype	UINT8
Min. Value	
Default	0
Max. Value	
Unit	
Access / EtherCAT-State	Rw
PDO Mapping	
Revision	All

1.30.4 9005:04 Hwld Hardware type

Description	Value
Index	0x9005 (Device)
Subindex	0x04
Datatype	UINT8
Min. Value	
Default	0
Max. Value	
Unit	
Access / EtherCAT-State	Rw
PDO Mapping	
Revision	All

1.30.5 9005:05 Hwld Feature flags

Description	Value
Index	0x9005 (Device)
Subindex	0x05
Datatype	UINT8
Min. Value	
Default	0
Max. Value	
Unit	
Access / EtherCAT-State	Rw
PDO Mapping	
Revision	All

1.30.6 9005:06 Hwld Supplier

Description	Value
Index	0x9005 (Device)
Subindex	0x06
Datatype	UINT8
Min. Value	
Default	0
Max. Value	
Unit	
Access / EtherCAT-State	Rw
PDO Mapping	
Revision	All

1.30.7 9005:07 Hwld Component type

Description	Value
Index	0x9005 (Device)
Subindex	0x07
Datatype	UINT8
Min. Value	
Default	0
Max. Value	
Unit	
Access / EtherCAT-State	Rw
PDO Mapping	
Revision	All

1.30.8 9005:08 Hwld reserve 2

Description	Value
Index	0x9005 (Device)
Subindex	0x08
Datatype	UINT8
Min. Value	
Default	0
Max. Value	
Unit	
Access / EtherCAT-State	Rw
PDO Mapping	
Revision	All

1.30.9 9005:09 Hwld Hardware index

Description	Value
Index	0x9005 (Device)
Subindex	0x09
Datatype	UINT8
Min. Value	
Default	0
Max. Value	
Unit	
Access / EtherCAT-State	Rw
PDO Mapping	
Revision	All

1.30.10 9005:0A Hwld Pcb revision

Description	Value
Index	0x9005 (Device)
Subindex	0x0A
Datatype	UINT8
Min. Value	
Default	0
Max. Value	
Unit	
Access / EtherCAT-State	Rw
PDO Mapping	
Revision	All

1.30.11 9005:0B Hwld Pcb type

Description	Value
Index	0x9005 (Device)
Subindex	0x0B
Datatype	UINT8
Min. Value	
Default	0
Max. Value	
Unit	
Access / EtherCAT-State	Rw
PDO Mapping	
Revision	All

1.30.12 9005:0C Hwld Supported no of channels

Description	Value
Index	0x9005 (Device)
Subindex	0x0C
Datatype	UINT8
Min. Value	
Default	0
Max. Value	
Unit	
Access / EtherCAT-State	Rw
PDO Mapping	
Revision	All

1.30.13 9005:0D Hwld Firmware index

Description	Value
Index	0x9005 (Device)
Subindex	0x0D
Datatype	UINT8
Min. Value	
Default	0
Max. Value	
Unit	
Access / EtherCAT-State	Rw
PDO Mapping	
Revision	All

1.30.14 9005:0F DMC 1

Description	Value
Index	0x9005 (Device)
Subindex	0x0F
Datatype	UINT8
Min. Value	
Default	48 (0x30)
Max. Value	
Unit	
Access / EtherCAT-State	Rw
PDO Mapping	
Revision	All

1.30.15 9005:10 DMC 2

Description	Value
Index	0x9005 (Device)
Subindex	0x10
Datatype	UINT8
Min. Value	
Default	0
Max. Value	
Unit	
Access / EtherCAT-State	Rw
PDO Mapping	
Revision	All

1.30.16 9005:11 DMC 3

Description	Value
Index	0x9005 (Device)
Subindex	0x11
Datatype	UINT8
Min. Value	
Default	0
Max. Value	
Unit	
Access / EtherCAT-State	Rw
PDO Mapping	
Revision	All

1.30.17 9005:12 DMC 4

Description	Value
Index	0x9005 (Device)
Subindex	0x12
Datatype	UINT8
Min. Value	
Default	0
Max. Value	
Unit	
Access / EtherCAT-State	Rw
PDO Mapping	
Revision	All

1.30.18 9005:13 DMC 5

Description	Value
Index	0x9005 (Device)
Subindex	0x13
Datatype	UINT8
Min. Value	
Default	0
Max. Value	
Unit	
Access / EtherCAT-State	Rw
PDO Mapping	
Revision	All

1.30.19 9005:14 DMC 6

Description	Value
Index	0x9005 (Device)
Subindex	0x14
Datatype	UINT8
Min. Value	
Default	0
Max. Value	
Unit	
Access / EtherCAT-State	Rw
PDO Mapping	
Revision	All

1.30.20 9005:15 DMC 7

Description	Value
Index	0x9005 (Device)
Subindex	0x15
Datatype	UINT8
Min. Value	
Default	0
Max. Value	
Unit	
Access / EtherCAT-State	Rw
PDO Mapping	
Revision	All

1.30.21 9005:16 DMC 8

Description	Value
Index	0x9005 (Device)
Subindex	0x16
Datatype	UINT8
Min. Value	
Default	0
Max. Value	
Unit	
Access / EtherCAT-State	Rw
PDO Mapping	
Revision	All

1.30.22 9005:17 DMC 9

Description	Value
Index	0x9005 (Device)
Subindex	0x17
Datatype	UINT8
Min. Value	
Default	0
Max. Value	
Unit	
Access / EtherCAT-State	Rw
PDO Mapping	
Revision	All

1.30.23 9005:18 DMC 10

Description	Value
Index	0x9005 (Device)
Subindex	0x18
Datatype	UINT8
Min. Value	
Default	0
Max. Value	
Unit	
Access / EtherCAT-State	Rw
PDO Mapping	
Revision	All

1.30.24 9005:1A Checksum

Description	Value
Index	0x9005 (Device)
Subindex	0x1A
Datatype	UINT16
Min. Value	
Default	0
Max. Value	
Unit	
Access / EtherCAT-State	Rw
PDO Mapping	
Revision	All

1.31 9006:x PSM Internal info

Description	Value
Index	0x9006 (Device)
Subindex	0x00
Datatype	UINT8
Min. Value	
Default	12 (0x0C)
Max. Value	
Unit	
Access / EtherCAT-State	Ro
PDO Mapping	
Revision	All

1.31.1 9006:01 DC link nominal current

Nominal current supported by device at DC link.

Description	Value
Index	0x9006 (Device)
Subindex	0x01
Datatype	UINT16
Min. Value	
Default	2000 (0x07D0)
Max. Value	
Unit	0,01 A
Access / EtherCAT-State	Ro
PDO Mapping	
Revision	All

1.31.2 9006:02 DC link peak overcurrent threshold

Current threshold to set the error "Peak over current (device output side)".

Description	Value
Index	0x9006 (Device)
Subindex	0x02
Datatype	UINT16
Min. Value	
Default	4000 (0x0FA0)
Max. Value	
Unit	0,01 A
Access / EtherCAT-State	Ro
PDO Mapping	
Revision	All

1.31.3 9006:03 24V-Supply nominal current

Nominal current of the 24V-supply supported by device.

Description	Value
Index	0x9006 (Device)
Subindex	0x03
Datatype	UINT16
Min. Value	
Default	2000 (0x07D0)
Max. Value	
Unit	0,01 A
Access / EtherCAT-State	Ro
PDO Mapping	
Revision	All

1.31.4 9006:04 Device max temperature

Maximal heatsink temperature supported by device, above which the error "Excess temperature device" is set.

Description	Value
Index	0x9006 (Device)
Subindex	0x04
Datatype	UINT16
Min. Value	
Default	800 (0x0320)
Max. Value	
Unit	0,1 °C
Access / EtherCAT-State	Ro
PDO Mapping	
Revision	All

1.31.5 9006:05 Internal brake resistor value

Resistance value of the internal brake resistor.

Description	Value
Index	0x9006 (Device)
Subindex	0x05
Datatype	UINT16
Min. Value	
Default	330 (0x014A)
Max. Value	
Unit	0,1 W
Access / EtherCAT-State	Ro
PDO Mapping	
Revision	All

1.31.6 9006:06 Internal brake resistor max power

Maximal continuous power of the internal brake resistor.

Description	Value
Index	0x9006 (Device)
Subindex	0x06
Datatype	UINT16
Min. Value	
Default	100 (0x0064)
Max. Value	
Unit	W
Access / EtherCAT-State	Ro
PDO Mapping	
Revision	All

1.31.7 9006:07 DC link max threshold voltage

Maximal DC link voltage threshold supported by device.

Description	Value
Index	0x9006 (Device)
Subindex	0x07
Datatype	UINT16
Min. Value	
Default	9200 (0x23F0)
Max. Value	
Unit	0,1 V
Access / EtherCAT-State	Ro
PDO Mapping	
Revision	All

1.31.8 9006:08 DC link min voltage

Minimal DC link voltage for device to be ready to operate.

Description	Value
Index	0x9006 (Device)
Subindex	0x08
Datatype	UINT16
Min. Value	
Default	0
Max. Value	
Unit	0,1 V
Access / EtherCAT-State	Ro
PDO Mapping	
Revision	All

1.31.9 9006:09 Brake chopper switchOn threshold voltage

Voltage threshold, above which the brake chopper is switched on.

Description	Value
Index	0x9006 (Device)
Subindex	0x09
Datatype	UINT16
Min. Value	
Default	0
Max. Value	
Unit	0,1 V
Access / EtherCAT-State	Ro
PDO Mapping	
Revision	All

1.31.10 9006:0A Brake chopper switchOff threshold voltage

Voltage threshold, below which the brake chopper is switched off.

Description	Value
Index	0x9006 (Device)
Subindex	0x0A
Datatype	UINT16
Min. Value	
Default	0
Max. Value	
Unit	0,1 V
Access / EtherCAT-State	Ro
PDO Mapping	
Revision	All

1.31.11 9006:0B Mains voltage max threshold

Maximal RMS-value of mains voltage. Above this value the error Mains overvoltage is set.

Description	Value
Index	0x9006 (Device)
Subindex	0x0B
Datatype	UINT16
Min. Value	
Default	0
Max. Value	
Unit	0,1 V
Access / EtherCAT-State	Ro
PDO Mapping	
Revision	All

1.31.12 9006:0C Mains voltage min threshold

Minimal RMS-value of mains voltage

Description	Value
Index	0x9006 (Device)
Subindex	0x0C
Datatype	UINT16
Min. Value	
Default	0
Max. Value	
Unit	0,1 V
Access / EtherCAT-State	Ro
PDO Mapping	
Revision	All

1.32 9007:x PSM Pcb ids Pcb id 3

Description	Value
Index	0x9007 (Device)
Subindex	0x00
Datatype	UINT8
Min. Value	
Default	26 (0x1A)
Max. Value	
Unit	
Access / EtherCAT-State	Ro
PDO Mapping	
Revision	All

1.32.1 9007:01 Structure version

Description	Value
Index	0x9007 (Device)
Subindex	0x01
Datatype	UINT16
Min. Value	
Default	0
Max. Value	
Unit	
Access / EtherCAT-State	Rw
PDO Mapping	
Revision	All

1.32.2 9007:02 Manufacturing date

Description	Value
Index	0x9007 (Device)
Subindex	0x02
Datatype	UINT16
Min. Value	
Default	0
Max. Value	
Unit	
Access / EtherCAT-State	Rw
PDO Mapping	
Revision	All

1.32.3 9007:03 Hwld reserve

Description	Value
Index	0x9007 (Device)
Subindex	0x03
Datatype	UINT8
Min. Value	
Default	0
Max. Value	
Unit	
Access / EtherCAT-State	Rw
PDO Mapping	
Revision	All

1.32.4 9007:04 Hwld Hardware type

Description	Value
Index	0x9007 (Device)
Subindex	0x04
Datatype	UINT8
Min. Value	
Default	0
Max. Value	
Unit	
Access / EtherCAT-State	Rw
PDO Mapping	
Revision	All

1.32.5 9007:05 Hwld Feature flags

Description	Value
Index	0x9007 (Device)
Subindex	0x05
Datatype	UINT8
Min. Value	
Default	0
Max. Value	
Unit	
Access / EtherCAT-State	Rw
PDO Mapping	
Revision	All

1.32.6 9007:06 Hwld Supplier

Description	Value
Index	0x9007 (Device)
Subindex	0x06
Datatype	UINT8
Min. Value	
Default	0
Max. Value	
Unit	
Access / EtherCAT-State	Rw
PDO Mapping	
Revision	All

1.32.7 9007:07 Hwld Component type

Description	Value
Index	0x9007 (Device)
Subindex	0x07
Datatype	UINT8
Min. Value	
Default	0
Max. Value	
Unit	
Access / EtherCAT-State	Rw
PDO Mapping	
Revision	All

1.32.8 9007:08 Hwld reserve 2

Description	Value
Index	0x9007 (Device)
Subindex	0x08
Datatype	UINT8
Min. Value	
Default	0
Max. Value	
Unit	
Access / EtherCAT-State	Rw
PDO Mapping	
Revision	All

1.32.9 9007:09 Hwld Hardware index

Description	Value
Index	0x9007 (Device)
Subindex	0x09
Datatype	UINT8
Min. Value	
Default	0
Max. Value	
Unit	
Access / EtherCAT-State	Rw
PDO Mapping	
Revision	All

1.32.10 9007:0A Hwld Pcb revision

Description	Value
Index	0x9007 (Device)
Subindex	0x0A
Datatype	UINT8
Min. Value	
Default	0
Max. Value	
Unit	
Access / EtherCAT-State	Rw
PDO Mapping	
Revision	All

1.32.11 9007:0B Hwld Pcb type

Description	Value
Index	0x9007 (Device)
Subindex	0x0B
Datatype	UINT8
Min. Value	
Default	0
Max. Value	
Unit	
Access / EtherCAT-State	Rw
PDO Mapping	
Revision	All

1.32.12 9007:0C Hwld Supported no of channels

Description	Value
Index	0x9007 (Device)
Subindex	0x0C
Datatype	UINT8
Min. Value	
Default	0
Max. Value	
Unit	
Access / EtherCAT-State	Rw
PDO Mapping	
Revision	All

1.32.13 9007:0D Hwld Firmware index

Description	Value
Index	0x9007 (Device)
Subindex	0x0D
Datatype	UINT8
Min. Value	
Default	0
Max. Value	
Unit	
Access / EtherCAT-State	Rw
PDO Mapping	
Revision	All

1.32.14 9007:0F DMC 1

Description	Value
Index	0x9007 (Device)
Subindex	0x0F
Datatype	UINT8
Min. Value	
Default	48 (0x30)
Max. Value	
Unit	
Access / EtherCAT-State	Rw
PDO Mapping	
Revision	All

1.32.15 9007:10 DMC 2

Description	Value
Index	0x9007 (Device)
Subindex	0x10
Datatype	UINT8
Min. Value	
Default	0
Max. Value	
Unit	
Access / EtherCAT-State	Rw
PDO Mapping	
Revision	All

1.32.16 9007:11 DMC 3

Description	Value
Index	0x9007 (Device)
Subindex	0x11
Datatype	UINT8
Min. Value	
Default	0
Max. Value	
Unit	
Access / EtherCAT-State	Rw
PDO Mapping	
Revision	All

1.32.17 9007:12 DMC 4

Description	Value
Index	0x9007 (Device)
Subindex	0x12
Datatype	UINT8
Min. Value	
Default	0
Max. Value	
Unit	
Access / EtherCAT-State	Rw
PDO Mapping	
Revision	All

1.32.18 9007:13 DMC 5

Description	Value
Index	0x9007 (Device)
Subindex	0x13
Datatype	UINT8
Min. Value	
Default	0
Max. Value	
Unit	
Access / EtherCAT-State	Rw
PDO Mapping	
Revision	All

1.32.19 9007:14 DMC 6

Description	Value
Index	0x9007 (Device)
Subindex	0x14
Datatype	UINT8
Min. Value	
Default	0
Max. Value	
Unit	
Access / EtherCAT-State	Rw
PDO Mapping	
Revision	All

1.32.20 9007:15 DMC 7

Description	Value
Index	0x9007 (Device)
Subindex	0x15
Datatype	UINT8
Min. Value	
Default	0
Max. Value	
Unit	
Access / EtherCAT-State	Rw
PDO Mapping	
Revision	All

1.32.21 9007:16 DMC 8

Description	Value
Index	0x9007 (Device)
Subindex	0x16
Datatype	UINT8
Min. Value	
Default	0
Max. Value	
Unit	
Access / EtherCAT-State	Rw
PDO Mapping	
Revision	All

1.32.22 9007:17 DMC 9

Description	Value
Index	0x9007 (Device)
Subindex	0x17
Datatype	UINT8
Min. Value	
Default	0
Max. Value	
Unit	
Access / EtherCAT-State	Rw
PDO Mapping	
Revision	All

1.32.23 9007:18 DMC 10

Description	Value
Index	0x9007 (Device)
Subindex	0x18
Datatype	UINT8
Min. Value	
Default	0
Max. Value	
Unit	
Access / EtherCAT-State	Rw
PDO Mapping	
Revision	All

1.32.24 9007:1A Checksum

Description	Value
Index	0x9007 (Device)
Subindex	0x1A
Datatype	UINT16
Min. Value	
Default	0
Max. Value	
Unit	
Access / EtherCAT-State	Rw
PDO Mapping	
Revision	All

1.33 A000:x PSM Actual internal values

Description	Value
Index	0xA000 (Device)
Subindex	0x00
Datatype	UINT8
Min. Value	
Default	4 (0x04)
Max. Value	
Unit	
Access / EtherCAT-State	Ro
PDO Mapping	
Revision	All

1.33.1 A000:01 Operating time

Total time of device life, in which the device has been turned on.

Description	Value
Index	0xA000 (Device)
Subindex	0x01
Datatype	UINT32
Min. Value	
Default	0
Max. Value	
Unit	s
Access / EtherCAT-State	Ro
PDO Mapping	
Revision	All

1.33.2 A000:02 Actual device temperature

Actual temperature of the heatsink.

Description	Value
Index	0xA000 (Device)
Subindex	0x02
Datatype	INT16
Min. Value	
Default	0
Max. Value	
Unit	0,1 °C
Access / EtherCAT-State	Ro
PDO Mapping	
Revision	All

1.33.3 A000:03 Umains frequency

Measured frequency of mains voltage.

Description	Value
Index	0xA000 (Device)
Subindex	0x03
Datatype	UINT8
Min. Value	
Default	0
Max. Value	
Unit	Hz
Access / EtherCAT-State	Ro
PDO Mapping	
Revision	All

1.33.4 A000:04 Mains type

Measured mains type.

Description	Value
Index	0xA000 (Device)
Subindex	0x04
Datatype	ENUM (UINT4)
Min. Value	
Default	AC 3 phases (0)
Max. Value	
Unit	
Access / EtherCAT-State	Ro
PDO Mapping	
Revision	All

Enum Value	Description
3 (0x03)	Not recognized
2 (0x02)	DC 1 phase
1 (0x01)	AC 1 phase
0 (0x00)	AC 3 phases

1.34 A001:x PSM Internal diagnostics

Description	Value
Index	0xA001 (Device)
Subindex	0x00
Datatype	UINT8
Min. Value	
Default	3 (0x03)
Max. Value	
Unit	
Access / EtherCAT-State	Ro
PDO Mapping	
Revision	All

1.34.1 A001:01 EtherCAT ISR overflow

Overflow in the EtherCAT interrupt routine happened. High active.

Description	Value
Index	0xA001 (Device)
Subindex	0x01
Datatype	BOOL
Min. Value	
Default	FALSE
Max. Value	
Unit	
Access / EtherCAT-State	Ro
PDO Mapping	
Revision	All

1.34.2 A001:02 User ISR overflow

Overflow in the user interrupt routine happened. High active.

Description	Value
Index	0xA001 (Device)
Subindex	0x02
Datatype	BOOL
Min. Value	
Default	FALSE
Max. Value	
Unit	
Access / EtherCAT-State	Ro
PDO Mapping	
Revision	All

1.34.3 A001:03 Main timeout

Timeout of the main routine happened. High active.

Description	Value
Index	0xA001 (Device)
Subindex	0x03
Datatype	BOOL
Min. Value	
Default	FALSE
Max. Value	
Unit	
Access / EtherCAT-State	Ro
PDO Mapping	
Revision	All

1.35 A002:x PSM Diagnostics

Description	Value
Index	0xA002 (Device)
Subindex	0x00
Datatype	UINT8
Min. Value	
Default	1 (0x01)
Max. Value	
Unit	
Access / EtherCAT-State	Ro
PDO Mapping	
Revision	All

1.35.1 A002:01 Diagnostic number

This object shall provide the error code of the first error, which occurred in this power supply module.

Description	Value
Index	0xA002 (Device)
Subindex	0x01
Datatype	UINT16
Min. Value	
Default	0
Max. Value	
Unit	
Access / EtherCAT-State	Ro
PDO Mapping	
Revision	All

1.36 F000:x Modular device profile

see ETG.5001.1 MDP GeneralSpec

Description	Value
Index	0xF000 (Device)
Subindex	0x00
Datatype	UINT8
Min. Value	
Default	2 (0x02)
Max. Value	
Unit	
Access / EtherCAT-State	Ro
PDO Mapping	
Revision	All

1.36.1 F000:01 Module index distance

see ETG.5001.1 MDP GeneralSpec

Description	Value
Index	0xF000 (Device)
Subindex	0x01
Datatype	UINT16
Min. Value	
Default	16 (0x0010)
Max. Value	
Unit	
Access / EtherCAT-State	Ro
PDO Mapping	
Revision	All

1.36.2 F000:02 Maximum number of modules

see ETG.5001.1 MDP GeneralSpec

Description	Value
Index	0xF000 (Device)
Subindex	0x02
Datatype	UINT16
Min. Value	
Default	1 (0x0001)
Max. Value	
Unit	
Access / EtherCAT-State	Ro
PDO Mapping	
Revision	All

1.37 F008 Code word

see ETG.5001.1 MDP GeneralSpec

Description	Value
Index	0xF008 (Device)
Subindex	0x00
Datatype	UINT32
Min. Value	
Default	
Max. Value	
Unit	
Access / EtherCAT-State	Rw
PDO Mapping	
Revision	All

1.38 F010:x Module list

see ETG.5001.1 MDP GeneralSpec

Description	Value
Index	0xF010 (Device)
Subindex	0x00
Datatype	UINT8
Min. Value	
Default	1 (0x01)
Max. Value	
Unit	
Access / EtherCAT-State	Rw / PreOp
PDO Mapping	
Revision	All

1.38.1 F010:01 SubIndex 001

see ETG.5001.1 MDP GeneralSpec

Description	Value
Index	0xF010 (Device)
Subindex	0x01
Datatype	UINT32
Min. Value	
Default	960 (0x000003C0)
Max. Value	
Unit	
Access / EtherCAT-State	Rw / PreOp
PDO Mapping	
Revision	All

More Information:
www.beckhoff.com/ax8000

Beckhoff Automation GmbH & Co. KG
Hülshorstweg 20
33415 Verl
Germany
Phone: +49 5246 9630
info@beckhoff.com
www.beckhoff.com

